



THE UNIVERSITY OF TEXAS AT EL PASO
BORDER BIOMEDICAL RESEARCH CENTER

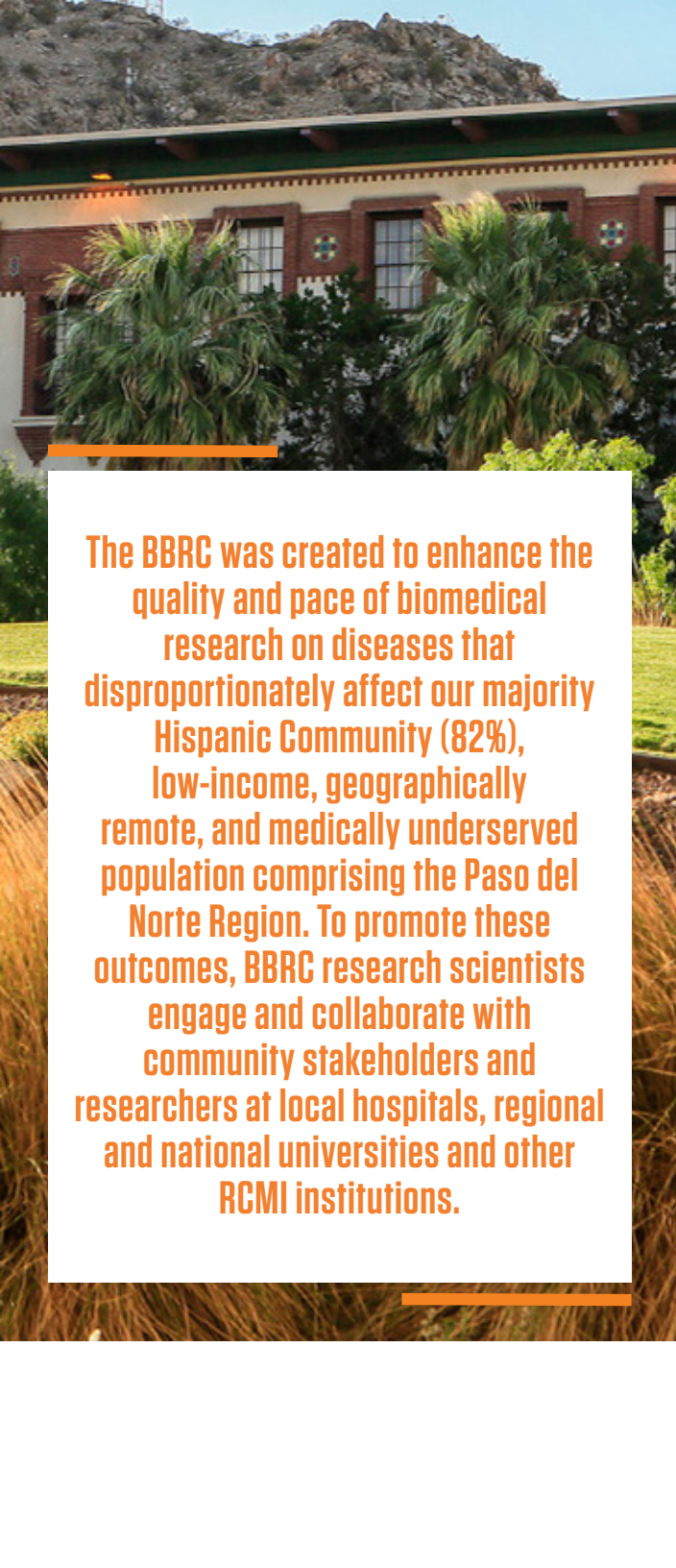


MISSION

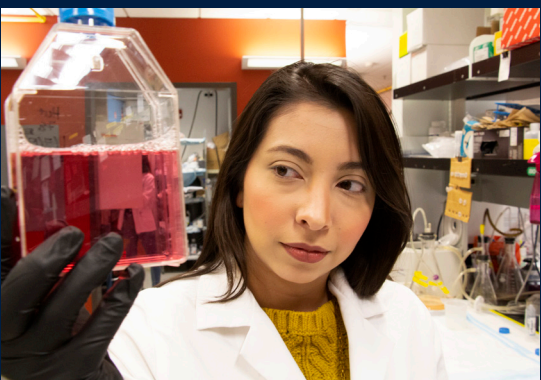
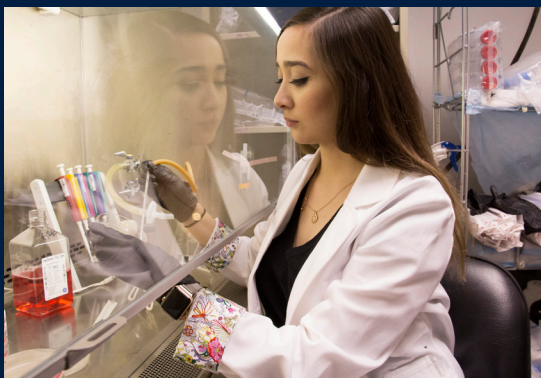
The mission of the BBRC is to attain health equity for our community by utilizing the infrastructure and expertise of BBRC faculty and staff to ensure the success of this interdisciplinary and translational research agenda.

ABOUT BBRC

The overall goal of the BBRC is to develop, grow and sustain the extant infrastructure and programs, as well as to recruit, train, and develop cancer scientists and health practitioners to promote high quality cancer research and to translate meaningful findings back to the community. Through mentoring, pilot programs, and enhanced research infrastructure we seek to promote investigator competitiveness in acquiring extramural funding to address regional disease disparities. We also seek to generate an environment that creates pipelines for undergraduate and graduate students into biomedical careers and serves as a major point of entry for Hispanics and other underrepresented minorities into the nation's biomedical workforce.

The background of the slide features a photograph of a large, multi-story building with a light-colored facade and dark red brick accents around the windows. Several palm trees are in the foreground, partially obscuring the building. In the background, a large, rocky hill rises under a clear blue sky. The text is overlaid on a white rectangular box in the center of the image.

The BBRC was created to enhance the quality and pace of biomedical research on diseases that disproportionately affect our majority Hispanic Community (82%), low-income, geographically remote, and medically underserved population comprising the Paso del Norte Region. To promote these outcomes, BBRC research scientists engage and collaborate with community stakeholders and researchers at local hospitals, regional and national universities and other RCMI institutions.



The cores and cancer research projects play complementary roles in improving the quality, volume, and efficiency of research across the university.

Administrative Core (AC)

The AC provides administrative support and facilitates communication among its faculty members, oversees fiscal, contractual and regulatory issues and activities, and coordinates interactions with RTRN/RRCN (RCMI Translational Research Network/RCMI Research Coordination Network). Additionally, the AC supports intra- and inter-institutional collaborations, partnerships, resource sharing, mentoring, professional development, and most important, research project development and implementation.

The AC is responsible for the overall management and coordination of the Center. It provides governance and operational management functions to facilitate the establishment and functioning of the cores and the successful execution of the research projects.

Community Engagement Core (CEC)

The CEC has been developing and nurturing bidirectional community partnerships to facilitate the translation of scientific findings and increasing resources and the community's capacity for research. The CEC will expand bidirectional, binational partnerships between BBRC researchers, community collaborators, and stakeholders to gain insight into the expressed health-related needs of the region. The CEC can provide scientific expertise to facilitate the translation of science and the dissemination of key research findings. Through these efforts the CEC can stimulate discussions surrounding the importance of underrepresented populations participating in research studies.

To meet the aims and the goals of BBRC investigators and research projects, the CEC will synergize partnerships and collaborations to facilitate cohesive strategies for participant engagement, recruitment, retention, and the dissemination of BBRC findings

Investigator Development Core

The goals of the IDC will be to:

1

Enhance our research capacity to conduct world-class basic biomedical, behavioral, and/or clinical research.

2

Improve the success rates of all investigators, especially early-stage investigators (ESI), seeking extramural support for projects that address minority health and health disparities.

3

Foster an environment that is conducive to enhancing career development for ESI.

The overarching goal of the IDC will be to foster excellence in the BBRC-RCMI investigator ranks by enabling them to secure competitive extramural funding in health disparities research and become adept at establishing robust research programs aligned with the center's mission.



Recruitment Core

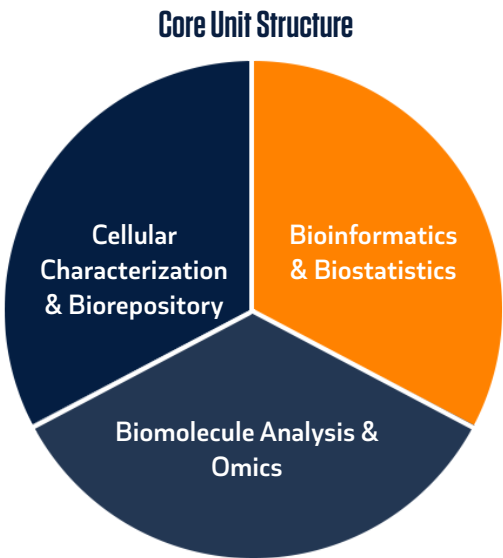
The Recruitment Core will support the vision of the UTEP BBRC to transform the understanding of Hispanic cancer-related health disparities by maximizing resources and expertise through the implementation of an aggressive hiring plan.

The overall goal of the Recruitment Core is to identify, recruit, hire, and successfully integrate faculty and Clinical Coordinators who will strengthen, extend and diversify the research capacity and infrastructure of the BBRC and the institution.

Research Infrastructure Core

The overarching goal of the Research Infrastructure Core (RIC) is to enhance investigator research capabilities and support the proposed projects, pilot projects, and other institutional biomedical, clinical and behavioral researchers and their regional and external collaborators.

RIC facility will provide principal investigators, students and staff access to state-of-the-art equipment to achieve the goals of their proposed research projects. The BBRC has established several core facilities over the past 25 years that provide essential support for the research of the majority of biomedical researchers at UTEP and the border region.



CONTACT US



bbrc@utep.edu



(915) 747-5536



500 W. University Ave. El Paso, Texas 79968

College of Science

utep.edu/science/bbrc