

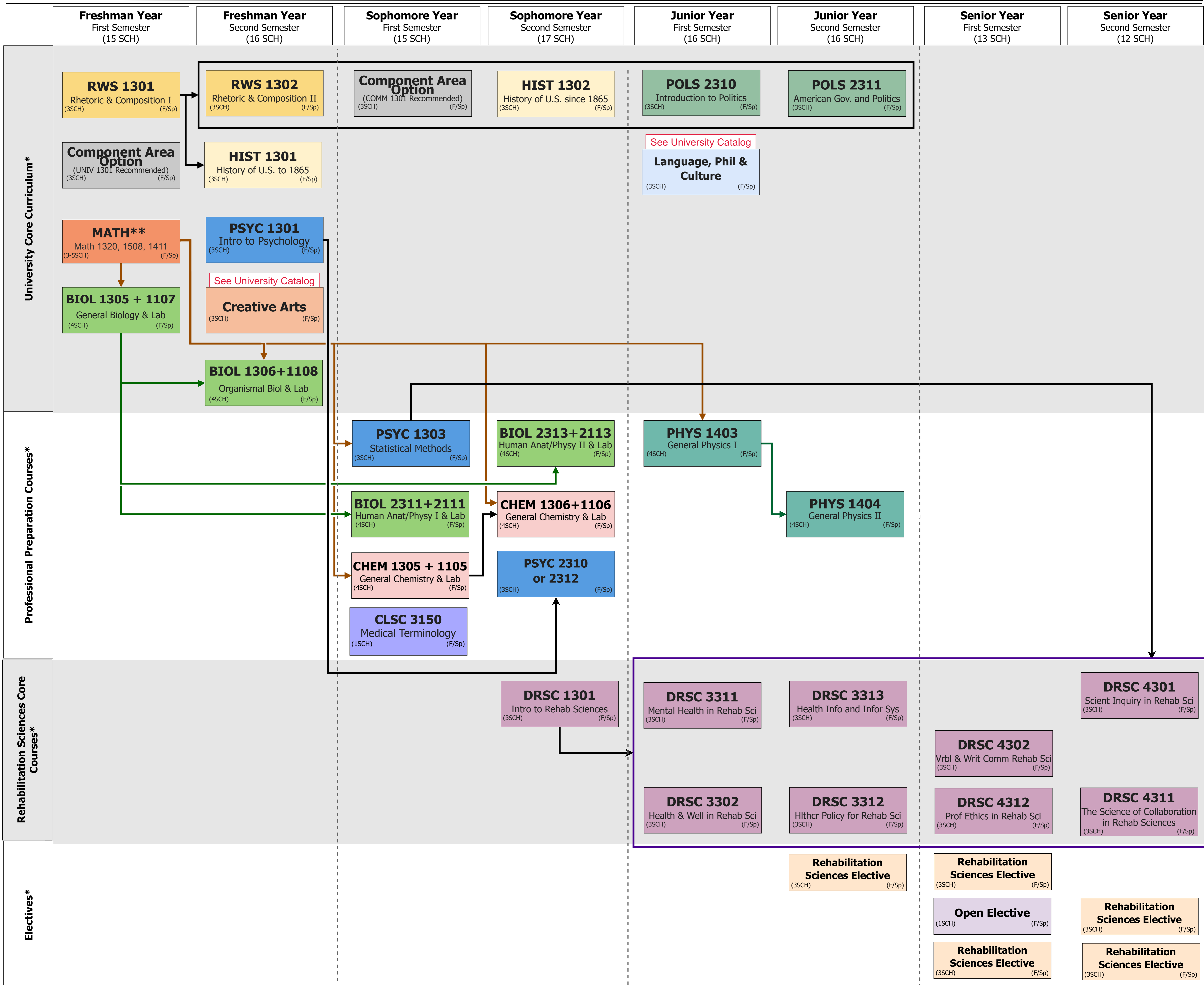
Bachelor of Science in Rehabilitation Sciences (Physical Therapy Concentration)

Required Semester Credit Hours (SCH): 120

Catalog Year 2023-2024
Sample Degree Plan

Refer to the University Catalog for all degree requirements at catalog.utep.edu. Many core curriculum courses are also offered in the summer (Su). Students are encouraged to register early and check Goldmine for course availability. The flowchart below may not reflect all student schedules; courses can be shifted to different semesters where applicable.

*C or better required.
Arrow indicates a prerequisite.
Color-coded boxes group the course subject.
F/Sp/Su indicates the semesters Fall/Spring/Summer.



** MATH 1508 is required unless you are transferring in CHEM 1305/1105 & CHEM 1306/1106. If you do not need MATH 1508 and choose to take a different MATH (i.e. 1320), the # of Open Elective credits may change