



THE UNIVERSITY OF TEXAS AT EL PASO

# College of Health Sciences

<http://chs.utep.edu/>

## Faculty Research Profiles



SPRING 2014



We are proud of the research accomplishments of the faculty, staff and students in the College of Health Sciences at The University of Texas at El Paso. I hope you will take this opportunity to learn more about our research programs and our commitment to meeting the needs of our unique U.S.-Mexico border region.

Our facilities are first-class. Our new \$60 million, 135,000 square foot College of Health Sciences and School of Nursing building on the UTEP campus strongly supports our teaching, learning, research and community engagement as we contribute to UTEP becoming a national research university. Our Campbell Building houses an interdisciplinary graduate professional education, clinical teaching and research environment. The *Center for Interdisciplinary Health Research and Evaluation (CIHRE)* applies our expertise to address critical and complex health issues, as well as to provide key training opportunities for graduate students and visiting faculty.

In partnership with hundreds of community-based clinical faculty, the College of Health Sciences offers a range of nationally-accredited professional education programs in the health, rehabilitation, education and human service fields. These programs lead to careers in 9 distinct professions: *clinical laboratory science, kinesiology, social work, public health, physical therapy, occupational therapy, speech-language pathology, rehabilitation counseling and pharmacy*. Our flagship interdisciplinary health sciences Ph.D. program also provides a unique educational path for clinicians to become the academic faculty and the health researchers of tomorrow. UTEP has been recognized as among the top universities in the nation awarding degrees in the health fields to Hispanic students.

Our commitment to academic and research excellence not only enhances student learning opportunities across our disciplines, but also contributes to advancing knowledge and clinical practice. I welcome you to explore the many opportunities for collaborative and interdisciplinary research with the College of Health Sciences. Please come visit our facilities and become acquainted with the research underway by our faculty and students.

Best wishes,

Kathleen A. Curtis, PT, Ph.D.  
Dean, College of Health Sciences  
The University of Texas at El Paso

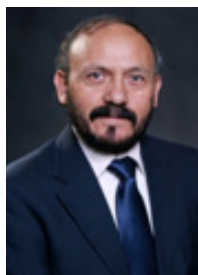
## Rocio Alvarenga, MOT, OTR



College of Health Sciences  
Occupational Therapy Program  
University of Texas at El Paso  
500 W. University Ave.  
El Paso, TX 79968

Phone: 915.747.8145  
E-mail: ralalvarenga@utep.edu

## Rodrigo Armijos, MD, Sc.D.



College of Health Sciences  
Department of Public Health  
Sciences  
University of Texas at El Paso  
500 W. University Ave.  
El Paso, TX 79968

Phone: 915.747.8309  
E-mail: rxarmijos@utep.edu

## Sudip Bajpeyi, Ph.D.



College of Health Sciences  
Department of Kinesiology  
University of Texas at El Paso  
500 W. University Ave.  
El Paso, TX 79968

Phone: 915.747.5461  
Email: sbajpeyi@utep.edu

## Roina Baquera, MS



College of Health Sciences  
Kinesiology Department  
University of Texas at El Paso  
500 W. University Ave.  
El Paso, TX 79968

Phone: 915.747.7240  
E-mail: ribaquera@utep.edu

## Erin Barnes, Ph.D., CRC, CVE



College of Health Sciences  
Rehabilitation Counseling  
Program  
University of Texas at El Paso  
500 W. University Ave  
El Paso, TX 79902

Phone: 915.747.7275  
E-mail: efbarnes@utep.edu

## Clinical Instructor

### Occupational Therapy Program

- MS Occupational Therapy—The University of Texas at El Paso (2010)
- BS Human Development and Family Sciences—University of Texas at Austin (2007)

### Research Interests

- Correlation of mindfulness practice with occupational performance of university students
- Parents role in child's psychosocial growth as it relates the child's development in occupational performance

## Associate Professor

### Department of Public Health Sciences

- Postdoctoral—The University of Texas at El Paso (2003)
- Sc.D. Immunology—Instituto Politécnico Nacional México (2002)
- M. Immunology—Instituto Politécnico Nacional México (1987)
- MD. - College of Medicine—Central University of Ecuador (1981)

### Research Interests

- Infectious disease prevention and control
- Leishmaniasis, Chagas' disease, intestinal parasites, tuberculosis
- Infection, nutrition and immune response
- Air pollutants and cardiovascular disease

## Assistant Professor

### Department of Kinesiology

- Ph.D. Bioenergetics—East Carolina University (2006)
- MA Ed. Exercise Science—University of Nebraska (2001)
- MS Physiology—University of Calcutta (1997)

### Research Interests

- Skeletal muscle bioenergetics
- Exercise training in relation to obesity and type 2 diabetes
- Intramyocellular Lipid content (IMCL), Mitochondria, and skeletal muscle fiber types.
- Role of PAT proteins in lipid metabolism and insulin action.

## Lecturer

### Department of Kinesiology

- MS Kinesiology—University of Texas at El Paso (1999)
- BS Kinesiology—University of Texas at El Paso (1991)

### Research Interests

- Effects of immediate feedback and two-way communication devices for college students enrolled in Physical Education Teacher Education programs
- Effects of quality physical education programming for college students
- Methods for preparing effective teachers in physical education

## Assistant Professor

### Rehabilitation Counseling Program

- Ph.D. Rehabilitation Counselor Education; The University of Iowa (2011)
- MA Rehabilitation Counseling, The University of Iowa (2005)
- BA Journalism and Mass Communication, The University of Iowa (2001)

### Research Interests

- Motivation- specifically behavioral intentions
- Professional identity development among rehabilitation counselor trainees.



## Candyce Berger, Ph.D., MSW



College of Health Sciences  
Department of Social Work  
University of Texas at El Paso  
500 W. University Ave  
El Paso, TX 79968

Phone: 915.747.5737  
E-mail: csberger2@utep.edu

## Professor and Chair

### Department of Social Work

- Ph.D. Social Work— University of Southern California (1982)
- MSW Social Work— Washington University (1973)
- BA Sociology — Washington University (1972)

### Research Interests

- Social work in health (hospitals and home care)
- Health policy
- Health care delivery systems
- Leadership and Administration
- Personnel management
- Falls prevention and the elderly

## Jason Boyle, Ph.D.



College of Health Sciences  
Kinesiology Department  
University of Texas at El Paso  
500 W. University Ave.  
El Paso, TX 79968

Phone: 915.747.7239  
E-mail: jbb Boyle@utep.edu

## Visiting Assistant Professor

### Department of Kinesiology

- Ph.D. Kinesiology - Texas A&M University (2014)
- MS Kinesiology - Texas A&M University (2010)
- BS Kinesiology— Texas A&M University (2008)

### Research Interests

- Enhancing goal directed limb movement
- Human-Computer interaction
- Complex bimanual coordination
- Aging

## Elizabeth Camacho, CLS, MT(ASCP)



College of Health Sciences  
Clinical Laboratory Program  
University of Texas at El Paso  
500 W. University Ave.  
El Paso, TX 79968

Phone: 915.747.8596 E-mail: ecamacho@utep.edu

## Lecturer

### Clinical Laboratory Sciences Program

- Certificate Molecular Laboratory Diagnostics— Michigan State University (2006)
- BS Clinical Laboratory Sciences— The University of Texas at El Paso (2001)

### Research Interests

- Molecular techniques to investigate host pathogen interaction in infection diseases.

## Suzanne Crow, MA, CCC-SLP



College of Health Sciences  
Speech-Language Pathology Program  
University of Texas at El Paso  
500 W. University Ave  
El Paso, TX 79968

Phone: 915.747.8220  
E-mail: smcrow@utep.edu

## Lecturer

### Speech Language Pathology Program

- MA Communication /Learning Disorders—Our Lady of the Lake University (1992)
- BA Speech Language Pathology— Our Lady of the Lake University, (1990)

### Research Interests

- Literacy in Children with Speech-Language Disorders
- Childhood Apraxia of Speech
- Supervisory Issues
- Interdisciplinary Collaboration

## Donna Cude-Islas, LCSW



College of Health Sciences  
Department of Social Work  
University of Texas at El Paso  
500 W. University Ave.  
El Paso, TX 79968

Phone: 915.747.6595  
E-mail: dcudeislas@utep.edu

## Clinical Instructor

### Department of Social Work

- MSSW – The University of Texas at Austin (2002)
- BS Social Work – The University of Texas at El Paso (2001)

### Research Interests

- Probate Court
- Dementia and Alzheimer's
- Disaster & Trauma



## Kathleen Curtis, PT, Ph.D.



College of Health Sciences  
University of Texas at El Paso  
500 W. University Ave.  
El Paso, TX 79968

Phone: 915.747.7201  
E-mail: kacurtis@utep.edu

## Professor and Dean

### College of Health Sciences

- Ph.D. Education — University of California Los Angeles (1990)
- MA Health Sciences— San Jose State University (1983)
- BS Physical Therapy — Northeastern University, Highest Honors, (1972)

### Research Interests

- Prevention of secondary disabilities;
- Aging and women's health issues in women with disabilities;
- Professional socialization in the health professions;
- Regional health disparities

## Sharon Davis, Ph.D, MPH, MCHES



College of Health Sciences  
Department of Public  
Health Sciences  
University of Texas at El  
Paso  
500 W. University Ave.

Phone: 915.747.7221  
E-mail: sthompson@utep.

## Associate Professor

### Department of Public Health Science

- Fellow— University of Texas at Austin (2005)
- Ph.D. Health Education —The University of New Mexico (1999)
- MPH—The University of Texas at Houston (1997)

### Research Interests

- U.S.-Mexico border health issues
- Health education/promotion in underserved communities

## Ellen Dengler, PT, Ph.D.



College of Health Sciences  
Physical Therapy Program  
University of Texas at El Paso  
500 W. University Ave.  
El Paso, TX 79968

Phone: 915.747.7610  
E-mail: ecdengler@utep.edu

## Assistant Professor

### Physical Therapy Program

- Ph.D. in Biomedical Sciences- University of New Mexico (2012)
- MS in Biology, San Diego State University (2007)
- BS in Physical Therapy, University of Pennsylvania (1975)

### Research Interests

- Neuroimmunology
- ALS
- Neuropathic pain
- Neurodegenerative processes

## Jamie L. Desjardins, Ph.D., CCC-A



College of Health Sciences  
Speech-Language Pathology  
Program  
University of Texas at El Paso  
500 W. University Ave.  
El Paso, TX 79968

Phone: 915.747. 7250  
E-mail: spchlang@utep.edu

## Assistant Professor

### Speech Language Pathology Program

- Ph.D. Audiology- Syracuse University (2011)
- MS Audiology - Syracuse University (2002)
- BS Speech Language Pathology and Audiology - State University of New York at Cortland (1999)

### Research Interests

- Hearing loss and cognitive function in middle-aged and older adults.
- Listening effort in background noise.

## Deborah S. Diaz, PT, Ph.D.



College of Health Sciences  
Physical Therapy Program  
University of Texas at El Paso  
500 W. University Ave.  
El Paso, TX 79968

Phone: 915.747.7248  
E-mail: dsdiaz@utep.edu

## Associate Professor and Program Director

### Physical Therapy Program

- Ph.D. Education, University of California, Los Angeles (2001)
- MA Education, California State University, Long Beach (1993)
- BS Physical Therapy California State University, Long Beach (1983)

### Research Interests

- Balance Measurement and Fall Prediction in Community Dwelling Older Adults
- Balance Measurement in Children
- Integrity in Physical Therapy Practice

## Loretta Dillon, PT, DPT



College of Health Sciences  
Physical Therapy Program  
University of Texas at El Paso  
500 W. University Ave.  
El Paso, TX 79968

Phone: 915.747.8215  
E-mail: ldillon@utep.edu

## Delfina Dominguez, MT(ASCP), Ph.D.



College of Health Sciences  
Clinical Laboratory Sciences  
Program  
University of Texas at El Paso  
500 W. University Ave.  
El Paso, TX 79968

Phone: 915.747.7238  
E-mail: delfina@utep.edu

## Sandor Dorgo, Ph.D.



College of Health Sciences  
Kinesiology Department  
University of Texas at El Paso  
500 W. University Ave.  
El Paso, TX 79968

Phone: 915.747.7222  
E-mail: sdorgo@utep.edu

## Maria Duarte-Gardea, Ph.D., RD,LD



College of Health Sciences  
Department of Public Health  
Sciences  
University of Texas at El Paso  
500 W. University Ave.  
El Paso, TX 79968

Phone: 915.747.7252  
E-mail: moduarte@utep.edu

## João Batista Ferreira-Pinto, Ph.D.



College of Health Sciences  
Center for Interdisciplinary  
Health Research and Evaluation  
University of Texas at El Paso  
500 W. University Ave.

Phone: 915.747.7295  
E-mail: joao@utep.edu

## Clinical Associate Professor

### Physical Therapy Program

- Doctor of Physical Therapy — Arizona School of Health Sciences (2005)
- MS Kinesiology — The University of Texas at El Paso (1994)
- BS Physical Therapy—University of Texas Health Sciences Center at Dallas (1983)
- BS Biology — The University of Texas at El Paso (1982)

### Research Interests

- Academic Predictors
- Physical Therapy Clinical Education

## Professor

### Clinical Laboratory Sciences Program

- Postdoctoral— University of Virginia, School of Medicine (2002-2003)
- Ph.D. Molecular Biology New Mexico State University (1997)
- MS Biology — The University of Texas at El Paso (1988)
- BS Medical Technology — The University of Texas at El Paso (1982)
- BS Biology — The University of Texas at El Paso (1980)

### Research Interests

- Microbial physiology
- Antimicrobial resistance
- Pertussis: development of a point of care test for pertussis
- Clinical trials H. pylori
- Development of biomarkers through clinical proteomics and genomics
- Biomarker discovery for mild brain injury

## Associate Professor

### Department of Kinesiology

- Ph.D. Physical Education & Sports Sciences— University of Georgia (2003)
- MS Physical Education — Hungarian University of Physical Education (1998)
- BS Coaching and Exercising— Semmelweis University of Budapest (1996)

### Research Interests

- Physiological Effects of Physical Training
- Youth Resistance Training
- Aging and Physical Activity
- Peer-mentoring

## Professor and Chair

### Department of Public Health Sciences

- Ph.D. Nutrition/Toxicology — New Mexico State University (1994)
- MS Nutrition/Toxicology — New Mexico State University (1991)
- MS Food Sciences — University of Chihuahua (1985)
- BS Food Sciences — University of Chihuahua (1980)

### Research Interests

- Nutrition and chronic disease prevention
- Nutrition education
- Gestational diabetes

## Research Associate Professor and Director of Research and Special Projects

### College of Health Sciences

- Ph.D. Social Sciences — University of California at Irvine (1981)
- MA Social Sciences — University of California at Irvine (1979)
- BA Psychology — California State University Fullerton (1978)
- BS Economics — California Polytechnic University Pomona (1973)

### Research Interests

- HIV/AIDS Prevention
- Drug Abuse Prevention and Treatment
- Border Studies

## Armando Gonzalez Stuart, Ph.D.



College of Health Sciences  
CIHRE  
University of Texas at El Paso  
500 W. University Ave.  
El Paso, TX 79968  
Phone: 915.747.7219  
E-mail: asgonzalez1@utep.edu

## Research Assistant Professor

### Center for Interdisciplinary Health Research and Evaluation (CIHRE)

- Ph.D. Alternative Medicine — Open International University, India (2001)
- BS Agronomy/Animal Sciences — Universitarian Study Center, Mexico (1980)

### Research Interests

- Herbal Medicine (Phytotherapy)
- Ethnobotany and ethnomycology
- Herb-drug interactions
- Plant and animal toxicology

## Eugenia Gonzalez, Ph.D., OTR



College of Health Sciences  
Occupational Therapy Program  
University of Texas at El Paso  
1101 N. Campbell  
El Paso, TX 79902  
Phone: 915.747.8218  
E-mail: ecgonzalez3@utep.edu

## Assistant Professor

### Occupational Therapy Program

- Ph.D. Psychology— The University of Texas at El Paso (2008)
- MS Occupational Therapy— Colorado State University (1992)
- BS Occupational Therapy — University of Texas Medical Branch (1980)

### Research Interests

- Functional independence for children with multiple disabilities or handicapping conditions
- Healthy care provider habits that facilitate caring for children with disabilities
- Learning potential of children with autism, LD, ADD, or ADHD
- Improving test/performance scores mono or bilingual Spanish speaking students

## Michelle L. Gutierrez, PT, D.Sc.



College of Health Sciences  
Physical Therapy Program  
University of Texas at El Paso  
1101 N. Campbell  
El Paso, TX 79902

Phone: 915.747.8148  
E-mail: mgutierrez28@utep.

## Clinical Assistant Professor

### Physical Therapy Program

- D.Sc. Physical Therapy University of Alabama at Birmingham (2012)
- MS Physical Therapy— University of Texas Medical Branch (1995)
- BS Health Care Sciences — University of Texas Medical Branch (1993)

### Research Interests

- Traumatic brain injury/ Concussion outcome measures (especially in military population).
- Vestibular Rehabilitation in concussion management.
- Assessing and treating exertional dizziness after concussion.

## Gabriel Ibarra-Mejia, M.D., Ph.D.



College of Health Sciences  
Department of Public Health Sciences  
University of Texas at El Paso  
500 W. University Ave.  
El Paso, TX 79968  
Phone: 915.747.7270  
E-mail: gabmejia@utep.edu

## Lecturer

### Department of Public Health Sciences

- Post-Doctoral —Public Health -University of Texas at El Paso (2006-2007)
- Ph.D.-Environmental Science and Engineering -University of Texas at El Paso (2005)
- MS- Ergonomics - Lulea Tekniska University (1999)

### Research Interests

- Work-related Musculoskeletal disorders (WRMSD) of the upper limb and spine
- WRMSD in migrant farm workers
- Intervention educational programs for prevention and early detection of WRMSD

## George King, Ph.D.



College of Health Sciences  
Kinesiology Department  
University of Texas at El Paso  
500 W. University Ave.  
El Paso, TX 79968  
Phone: 915.747.7284  
E-mail: gking@utep.edu

## Associate Professor and Associate Dean

### Department of Kinesiology

- Ph.D. Exercise Physiology —The University of Tennessee (2001)
- MS Exercise Physiology —Colorado State University (1996)
- BS Exercise Physiology —Colorado State University (1994))

### Research Interests

- Physical Activity Assessment
- Thermoregulatory Hormones
- Physical Activity and the Built Environment
- Obesity Related Disease Risk



## Patricia Lara, Ph.D., CCC-SLP



College of Health Sciences  
Speech-Language Pathology  
Program  
University of Texas at El Paso  
500 W. University Ave.  
El Paso, TX 79968

Phone: 915.747.7271  
E-mail: plara2@utep.edu

## Assistant Professor

### Speech-Language Pathology Program

- Ph.D. - Interdisciplinary Health Sciences, University of Texas at El Paso (2012)
- MS - Speech pathology; adult neurogenic language disorders, University of Texas at El Paso (1985)

### Research Interests

- Event Related Potentials
- Auditory comprehension
- Aphasia

## Kathy Lawson, Ph.D., OTR, LMSW



College of Health Sciences  
Occupational Therapy Program  
University of Texas at El Paso  
500 W. University Ave.  
El Paso, TX 79968

Phone: 915.747.8517  
E-mail: kalawson@utep.edu

## Assistant Professor

### Occupational Therapy Program

- Ph.D. Interdisciplinary Health Sciences — The University of Texas at El Paso (2013)
- BS-UTEP/University of Texas Medical Branch in Galveston Cooperative Occupational Therapy Program (1994)
- MSSW-University of Texas at Arlington (1987)
- BSW-New Mexico State University (1984)

### Research Interests

- Home Health Geriatrics
- Child and Spouse Abuse within the Military Setting
- Discharge Planning within the Hospital Setting

## Amanda Loya, Pharm. D.



College of Health Sciences  
UTEP / UT Austin Cooperative  
Pharmacy Program  
University of Texas at El Paso  
500 W. University Ave.  
El Paso, TX 79968

Phone: 915.747.8534  
E-mail: amloya1@utep.edu

## Clinical Associate Professor

### UTEP / UT Austin Cooperative Pharmacy Program

- Pharm. D. — The University of Texas at Austin (2003)
- BS Microbiology — The University of Texas at El Paso

### Research Interests

- Polypharmacy and Polyherbacy
- Health and Medication Literacy

## Oralia Loza, Ph.D.



College of Health Sciences  
Department of Public Health  
Sciences  
University of Texas at El Paso  
500 W. University Ave.  
El Paso, TX 79968

Phone: 915.747.7232  
E-mail: oloza@utep.edu

## Assistant Professor

### Department of Public Health Sciences

- Ph.D. Public Health Epidemiology—University of California at San Diego (2009)
- MA Statistics—University of California at Santa Barbara (2001)
- BS Mathematics—University of California at Santa Barbara (1998)

### Research Interests

- HIV and STI Risk Factors and Prevention
- Marginalized and high risk populations such as migrants, sex workers, men who have sex with men, transgender women, injection drug users
- Substance abuse research
- Ethnic health disparities

## Mark Lusk, Ed.D., LMSW



College of Health Sciences  
Department of Social Work  
University of Texas at El Paso  
500 W. University Ave.  
El Paso, TX 79968

Phone: 915.747.8588  
E-mail: mwlusk@utep.edu

## Professor

### Department of Social Work

- Ed.D. Education and Social Work—University of Kentucky (1981)
- MSSW University of Kentucky (1978)
- BS Sociology/Social Work, New Mexico State University (1972)

### Research Interests

- International development
- Street children
- Trauma and refugees and human trafficking
- Immigration and human rights
- Tuberculosis in the US México Border region

## Thenral Mangadu, MD, Ph.D., MPH



College of Health Sciences  
Department of Public Health  
Sciences  
University of Texas at El Paso  
500 W. University Ave.  
El Paso, TX 79968

Phone: 915.747.8615  
E-mail: [tdmangadu@utep.edu](mailto:tdmangadu@utep.edu)

### Assistant Professor

#### Department of Public Health Sciences

- Ph.D. Interdisciplinary Health Sciences. University of Texas El Paso (2010)
- MPH University of Texas Houston School of Public Health El Paso Campus

### Research Interests

- HIV/AIDS
- Woman's health
- Global health
- Structural violence
- Program evaluation.

## Bertha Manriquez, MS, CCC-SLP



College of Health Sciences  
Speech-Language Pathology  
Program  
University of Texas at El Paso  
500 W. University Ave.  
El Paso, TX 79968

Phone: 915.747.8307  
E-mail: [bmanriquez@utep.edu](mailto:bmanriquez@utep.edu)

### Lecturer

#### Speech-Language Pathology Program

- MS Speech-Language Pathology —University of Texas at El Paso, (2005)

### Research Interests

- Attention and auditory comprehension in aphasic adults.

## Adam McCormick, Ph.D., MSW



College of Health Sciences  
Department of Social Work  
University of Texas at El Paso  
500 W. University Ave.  
El Paso, TX 79968

Phone: 915.747.5453  
E-mail: [agmccormick@utep.edu](mailto:agmccormick@utep.edu)

### Assistant Professor

#### Department of Social Work

- Ph.D. in Social Work — University of Texas at Arlington (2009)
- MSW-- University of Texas at Austin (2006)
- BSW—Lubbock Christian University (2003)

### Research Interests

- LGBTQI Youth in the Child Welfare System
- Hispanic LGBTQI Youth and Young Adults
- The relationship rights of siblings in the Foster Care System

## Harry Meeuwsen, Ph.D.



College of Health Sciences  
Kinesiology Department  
University of Texas at El Paso  
500 W. University Ave.  
El Paso, TX 79968

Phone: 915.747.8459  
E-mail: [meeuwsen@utep.edu](mailto:meeuwsen@utep.edu)

### Professor

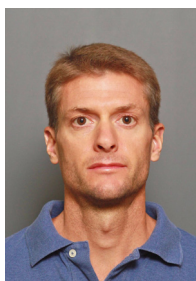
#### Kinesiology Department

- Ph.D. Physical Education—Louisiana State University (1987)
- MS Physical Education—University of New Hampshire (1982)
- BS Physical Education & National Teaching Certification (1981)

### Research Interests

- Effective teaching using collaboration and cooperative learning strategies

## Sean Miller, MS



College of Health Sciences  
Kinesiology Department  
University of Texas at El Paso  
500 W. University Ave.  
El Paso, TX 79968

Phone: 915.747.5454  
E-mail: [stmiller@utep.edu](mailto:stmiller@utep.edu)

### Lecturer

#### Department of Kinesiology

- MS Kinesiology —University of Texas at El Paso (2012)
- BS Kinesiology —University of Texas at El Paso (2008)

### Research Interests

- Ergogenic aids for improved sports performance
- Running economy in elite level middle and long distance runners
- Resistance training for endurance athletes

## Jacen Moore, Ph.D., MA, BSMT



College of Health Sciences  
Clinical Laboratory Sciences  
Program  
University of Texas at El Paso  
500 W. University Ave.  
El Paso, TX 79968

Phone: 915.747.7243

E-mail: jsmaiermoore@utep.edu

### Assistant Professor

#### Clinical Laboratory Sciences Program

- Ph.D. Experimental Pathology - University of Oklahoma Health Sciences Center (2006)
- BS Medical Technology - University of Nebraska Medical Center (2001)
- MA Biology - University of Nebraska-Omaha (1996)
- BS Biology - University of Nebraska-Omaha (1992)

#### Research Interests

- Role of Heme Oxygenase-1 in Lupus Nephritis and End Stage Renal Disease
- Incidence and pathogenesis of Tularemia infections in U.S./Mexico Border
- Novel Point-of-Care therapies for poisonous snake venom intoxication

## Eva Moya, Ph.D., LMSW



College of Health Sciences  
Department of Social Work  
University of Texas at El Paso  
500 W. University Ave.  
El Paso, TX 79968

Phone: 915.747.8493

E-mail: emmoya@utep.edu

### Assistant Professor

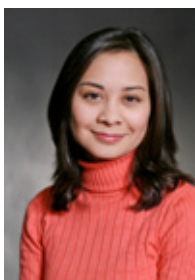
#### Department of Social Work

- Ph.D. Interdisciplinary Health Sciences — The University Texas of El Paso (2010)
- MSW University of Texas at Austin (1988)
- BS Social Work — The University Texas of El Paso (1981)

#### Research Interests

- Tuberculosis
- Health related Stigma
- Photovoice method
- Domestic Violence, sexual and Reproductive Health

## Vannesa Mueller, Ph.D. CCC-SLP



College of Health Sciences  
Speech-Language Pathology  
Program  
University of Texas at El Paso  
500 W. University Ave.  
El Paso, TX 79968

Phone: 915.747.8281

E-mail: vtmueller@utep.edu

### Assistant Professor

#### Speech-Language Pathology Program

- Ph.D. Speech and Hearing Sciences — The University of Iowa (2008)
- MA Speech-Language Pathology - Our Lady of the Lake University, (2002)
- BA Communication Disorders — Our Lady of the Lake University, (2000)

#### Research Interests

- Augmentative and Alternative Communication
- Language and literacy development in deaf and hard of hearing populations
- Technology enhanced literacy interventions

## Yok-Fong Paat, Ph.D., MSW, LCSW



College of Health Sciences  
Social Work  
University of Texas at El Paso  
500 W. University Ave. El Paso,  
TX 79968

Phone: 915.747.5789

E-mail: ypaat@utep.edu

### Assistant Professor

#### Department of Social Work

- Ph.D. Sociology — University of Oklahoma (2012)
- MSW — University of Oklahoma (2004)
- BSW — Western Michigan University (2003)

#### Research Interests

- Children's well-being
- Mental health
- Community health
- Family violence
- Immigration and migration

## Margie E. Padilla, Pharm.D., CDE



College of Health Sciences  
UTEP / UT Austin Cooperative  
Pharmacy Program  
University of Texas at El Paso  
500 W. University Ave.  
El Paso, TX 79968

Phone: 915.747.8532

E-mail: meperez@utep.edu

### Clinical Assistant Professor

#### UTEP / UT Austin Cooperative Pharmacy Program

- Pharm. D. — The University of Texas at El Paso/ University of Texas at Austin Cooperative Pharmacy Program (2005)
- BA Biology/Chemistry — Our Lady of the Lake University, (1992)

#### Research Interests

- Diabetes Mellitus management in underserved populations
- Disease State Management (DSM) of Chronic Diseases
- Medication Therapy Management (MTM). Women's Health (Pregnancy & Lactation)
- Underserved populations/Access to Health Care /Community Health Centers



## **Celia Pechak, PT, Ph.D., MPH**



College of Health Sciences  
Physical Therapy Program  
University of Texas at El Paso  
500 W. University Ave.  
El Paso, TX 79968

Phone: 915.747.7289  
E-mail: [cmpechak@utep.edu](mailto:cmpechak@utep.edu)

## **Assistant Professor**

### **Physical Therapy Program**

- Ph.D. Physical Therapy —Texas Woman's University (2007)
- MPH—University of Hawaii (1995)
- BS Physical Therapy —Marquette University (1985)

### **Research Interests**

- International clinical education
- International service-learning
- Global health and Rehabilitation

## **Adriana Rascon, MS, RD, LD, CHES**



College of Health Sciences  
Department of Public Health Sciences  
University of Texas at El Paso  
500 W. University Ave.  
El Paso, TX 79968

Phone: 915.747.8548  
E-mail: [arascon3@utep.edu](mailto:arascon3@utep.edu)

## **Lecturer**

### **Department of Public Health Sciences**

- MS Family and Consumer Sciences —New Mexico State University (2002)
- BS Health Sciences —The University of Texas at El Paso (1996)

### **Research Interests**

- Prevention of disordered eating, anorexia, bulimia, and binge eating.
- Validation of weight management practices instruments.
- Effect of behavioral and psychological consequences in obesity.
- All these with an emphasis on predominately Hispanic student population.

## **José Rivera, Pharm. D.**



College of Health Sciences  
UTEP / UT Austin Cooperative Pharmacy Program  
University of Texas at El Paso  
500 W. University Ave.  
El Paso, TX 79968

Phone: 915.747.8535  
E-mail: [jrivera@utep.edu](mailto:jrivera@utep.edu)

## **Clinical Professor and Director**

### **UTEP / UT Austin Cooperative Pharmacy Program**

- Pharm. D. —University of Kentucky (1979)
- BS Pharmacy —University of Puerto Rico (1976)

### **Research Interests**

- Border Health
- Complementary Alternative Medicine
- Antibody Resistance
- Medication Literacy

## **Anthony Salvatore, Ph.D., CCC-SLP**



College of Health Sciences  
Rehabilitation Sciences  
University of Texas at El Paso  
500 W. University Ave.  
El Paso, TX 79968

Phone: 915.747.7265  
E-mail: [asalvatore@utep.edu](mailto:asalvatore@utep.edu)

## **Professor and Chair**

### **Department of Rehabilitation Sciences & Speech and Language Pathology Program**

- Postdoctoral Research Fellow National Institutes of Health (1974-76)
- Ph.D. —University of Pittsburgh, PA (1974)
- MS Speech Language Pathology —Emerson College, Boston, Ma (1969)
- BS Speech Language Pathology—Emerson College, Boston, MA (1966)

### **Research Interests**

- Diagnosis and treatment of sports related concussion
- The nature of metabolic changes following sports related concussion
- Nature of brain plasticity associated with recovery of auditory comprehension in adults with aphasia. Impact of the temporal characteristics of spoken messages on auditory comprehension in adults with aphasia

## **Kathryn Schmidt Ph.D.**



College of Health Sciences  
Department of Social Work  
University of Texas at El Paso  
500 W. University Ave.  
El Paso, TX 79968

Phone: 915.747.5095  
E-mail: [kjschmidt2@utep.edu](mailto:kjschmidt2@utep.edu)

## **Assistant Professor**

### **Department of Social Work**

- Ph.D. Sociology —University of North Carolina-Chapel Hill (2008)
- MS Sociology — University of North Carolina-Chapel Hill (1995)
- BS Sociology—Indiana University (1992)

### **Research Interests**

- LGBTQI people's access to social services
- Sexual attitudes, behaviors, and experiences of college students
- Evaluating effective interventions for family and sexual violence

## **Barbara A. Schoen, Ph.D., CRC**



College of Health Sciences  
Rehabilitation Counseling  
Program  
University of Texas at El Paso  
500 W. University Ave.  
El Paso, TX 79968

Phone: 915.747.8240  
E-mail: [baschoen@utep.edu](mailto:baschoen@utep.edu)

## **Jeri Sias, Pharm. D.,**



College of Health Sciences  
UTEP / UT Austin Cooperative  
Pharmacy Program  
University of Texas at El Paso  
500 W. University Ave.  
El Paso, TX 79968

Phone: 915.747.8599  
E-mail: [jjcias@utep.edu](mailto:jjcias@utep.edu)

## **Bess Sirmon-Taylor, Ph.D., CCC-SLP**



College of Health Sciences  
Speech- Language Pathology  
Program  
University of Texas at El Paso  
500 W. University Ave.  
El Paso, TX 79968

Phone: 915.747.7278  
E-mail: [bsfjordbak@utep.edu](mailto:bsfjordbak@utep.edu)

## **Christina Sobin, Ph.D.**



College of Health Sciences  
Department of Public Health  
Sciences  
University of Texas at El Paso  
500 W. University Ave.  
El Paso, TX 79968

Phone: 915.747.8485  
E-mail: [casobin@utep.edu](mailto:casobin@utep.edu)

## **Elaine J. Struthers, Ph.D., M.O.T**



College of Health Sciences  
Occupational Therapy Program  
University of Texas at El Paso  
500 W. University Ave  
El Paso, TX 79968

Phone: 915.747.8153  
E-mail: [ejstruthers@utep.edu](mailto:ejstruthers@utep.edu)

## **Assistant Professor and Program Director**

### **Rehabilitation Counseling Program**

- Ph.D. Rehabilitation Counselor Education—Michigan State University (2010)
- MA Rehabilitation Counseling—Michigan State University (2003)
- BS Business Administration—Eastern Michigan University (1993)

### **Research Interests**

- Empowerment of marginalized populations with disabilities
- Independence and employment of consumers with spinal cord injury
- Data mining methodologies

## **Clinical Associate Professor**

### **UTEP / UT Austin Cooperative Pharmacy Program**

- MPH —University of Texas Houston School of Public Health (2009)
- Ambulatory Care Residency—The Ohio State University (1999)
- Pharm. D.—University of Kansas (1998)
- BA Chemistry —Texas Christian University (1993)

### **Research Interests**

- Health/Medication Literacy / Public Health and Pharmacy
- Community-Based Participatory Research /Cultural Competency
- Smoking Cessation, Immunizations
- Disease State Management/Medication Therapy Management

## **Associate Professor**

### **Speech-Language Pathology Program**

- Ph.D. Linguistics— University of Georgia (2006)
- MS Psychology— Georgia College and State University (1992)
- MS Speech Pathology and Audiology — Florida State University (1987)
- BS Speech Pathology and Audiology — Florida State University, (1984)

### **Research Interests**

- Sequelae of cognitive-linguistic deficits after sports-related concussion
- Differential diagnosis of mild traumatic brain injury in post-deployment soldiers
- Language variation as diagnostic markers in mental illness
- Measurement of critical thinking in professional education

## **Associate Professor and Program Director**

### **Interdisciplinary Health Sciences Ph.D. Program**

#### **Department of Public Health Sciences**

- Ph.D. - Clinical Psychology, New York University (1990)
- BA - Psychology, City College, City University of New York (1983)

### **Research Interests**

- Low level lead exposure in border region
- Child development
- Genetics
- Cognitive psychology
- Public health and environmental policy.

## **Visiting Assistant Professor**

### **Occupational Therapy Program**

- Ph.D. Behavioral Biology of Primates - New Mexico State University (1992)
- M.O.T. Occupational Therapy - University of Puget Sound (1999)
- MA Physical Anthropology - New Mexico State University (1988)

### **Research Interests**

- Occupational justice and emerging practice in occupational therapy
- Sensory integration theory and practice in occupational therapy
- Development of occupational therapy as a profession in Bulgaria and Eastern Europe
- Neurodevelopmental issues of children in foster and institutionalized care

## Connie Summers, Ph.D., CCC-SLP



College of Health Sciences  
Speech-Language Pathology  
Program  
University of Texas at El Paso  
500 W. University Ave.  
El Paso, TX 79968  
Phone: 915.747.8226  
E-mail: csummers@utep.edu

## Assistant Professor

### Speech-Language Pathology Program

- Ph.D. Communication Sciences and Disorders —University of Texas at Austin (2010)
- MS Speech Language Pathology —Brigham Young University (2000)
- BS Speech Language Pathology—Brigham Young University (1998)

## Research Interests

- Children language development and disorders
- Language learning mechanisms in bilingual children
- Language assessment and intervention in culturally and linguistically diverse children

## Sam Terrazas, Ph.D., MSW, LCSW



College of Health Sciences  
Department of Social Work  
University of Texas at El Paso  
500 W. University Ave  
El Paso, TX 79968  
Phone: 915. 747.5795  
E-mail: srterrazas@utep.edu

## Assistant Professor

### Department of Social Work

- Ph.D. in Social Work —Barry University (2010)
- MSW —Barry University (1994)
- BSW —Florida Atlantic University (1991)

## Research Interests

- Farmworker mental health.
- Access and utilization of human services among Hispanics and farmworkers.

## Lori Torres, MS, MT (ASCP)



College of Health Sciences  
Clinical Laboratory Sciences  
Program  
University of Texas at El Paso  
500 W. University Ave.  
El Paso, TX 79968  
Phone: 915.747.7282  
E-mail: lorit@utep.edu

## Clinical Assistant Professor and Program Director

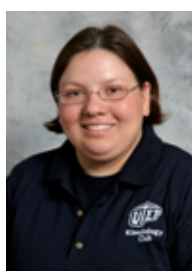
### Clinical Laboratory Sciences Program

- Ed.D. Educational Leadership—The University of (2010)
- MS Biology —The University of Texas at El Paso (1982)
- BS Medical Technology —The University of Texas at El Paso (1985)
- BS Biology — The University of Texas at El Paso (1980)

## Research Interests

- Education
- Leadership in professional Education

## Nancy Torres, MS



College of Health Sciences  
Kinesiology Department  
University of Texas at El Paso  
500 W. University Ave.  
El Paso, TX 79968  
Phone: 915.747.7266  
E-mail: natorres@utep.edu

## Lecturer

### Kinesiology Department

- MS Kinesiology — The University of Texas at El Paso (2003)
- BS Kinesiology— The University of Texas at El Paso (2000)

## Research Interests

- Physical Education Mentoring
- Afterschool Physical Activity Programs
- Adapted Physical Education
- Service Learning

## Benigno Valles, MS., CCC-SLP



College of Health Sciences  
Speech-Language Pathology  
Program  
University of Texas at El Paso  
500 W. University Ave.  
El Paso, TX 79968  
Phone: 915.747.7209  
E-mail: bvalles@utep.edu

## Clinical Coordinator

### Speech-Language Pathology Program

- MS Speech Language Pathology— The University of Texas at El Paso (1996)
- Certified Bilingual Speech Language Pathologist— The University of Texas at El Paso (2006)

## Research Interests

- Bilingual (English/Spanish) Communication Disorders
- Childhood Apraxia of Speech
- Multilingual/Multicultural Communication Disorders
- Supervisory Issues



## Celeste Vinluan, Pharm.D.



College of Health Sciences  
University of Texas at El Paso  
500 W. University Ave  
El Paso, TX 79968

Phone: 915.747.8302  
E-mail: cmvinluan@utep.edu

## M. Margaret Weigel, Ph.D.



College of Health Sciences  
Department of Public Health Sciences  
University of Texas at El Paso  
500 W. University Ave.  
El Paso, TX 79968

Phone: 915.747.8308  
E-mail: mmweigel@utep.edu

## Leah Whigham, Ph.D., FTOS



College of Health Sciences  
Department of Public Health Sciences  
University of Texas at El Paso

Phone: 915.747.8095  
E-mail: ldwhigham@utep.

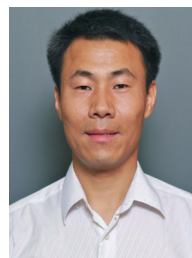
## David Wittenburg, Ph.D.



College of Health Sciences  
Department of Kinesiology  
University of Texas at El Paso  
500 W. University Ave.  
El Paso, TX 79968

Phone: 915.747.7208  
E-mail: wittenbu@utep.edu

## Feng Yang Ph.D.



College of Health Sciences  
Department of Kinesiology  
University of Texas at El Paso  
500 W. University Ave  
El Paso, TX 79968

Phone: 915.747.8228  
E-mail: fyang@utep.edu

## Clinical Assistant Professor

### UTEP / UT Austin Cooperative Pharmacy Program

- Pharm. D.- Virginia Commonwealth University (2012)
- BS Biology- University of California, San Diego (2005)

### Research Interests

- Transition of care among elderly patients.
- Implementation of new medication strategies in a teaching hospital.
- Impact of pharmacist discharge counseling on readmission rates.

## Professor

### Department of Public Health Sciences

- Postdoctoral—Oregon Health and Sciences University (OHSU) (1987)
- Ph.D. Biological Anthropology— University of California at Los Angeles (1985)
- MA Biological Anthropology—Florida Atlantic University (1981)
- BA Anthropology—Florida Atlantic University (1979)

### Research Interests

- Infectious disease, reproductive & nutritional epidemiology
- Maternal-child health & nutrition especially factors affecting maternal and perinatal outcomes
- Food insecurity, nutrition, and health , Ethnomedicin

## Research Associate Professor and Executive Director Paso del Norte Institute for Healthy Living (PDN IHL)

### Department of Public Health Sciences

- Ph.D. Nutritional Sciences - University of Wisconsin-Madison (2000)
- BS Biochemistry - Biology- Iowa State University (1993)

### Research Interests

- Weight loss
- Obesity prevention
- Public and community health

## Associate Professor and Chair

### Department of Kinesiology

- Ph.D. Kinesiology -Texas A&M University (2000)
- M.Ed. Physical Education - Texas State University (1994)
- BS Physical Education - Angelo State University (1984)

### Research Interests

- Coronary and Vascular Disease Prevention and Intervention
- Pediatric Health-Related Fitness
- Development of Partnership Programs between Medical and Exercise Specialists

## Assistant Professor

### Department of Kinesiology

- Ph.D. Human-machine and Environment Engineering - Beijing University of Aeronautics and Astronautics (2004)
- BS Refrigeration and Cryogenic Engineering - Beijing University of

### Research Interests

- Fall prevention among older adults and individuals with movement disorders
- Computational biomechanics
- Dynamic stability and balance control during human movement

# COLLEGE OF HEALTH SCIENCES RESEARCH RESOURCES

## MAIN CAMPUS LABORATORIES

**The Human Immunology and Nutrition Research Laboratory (HINRL)** is located in a 3,000 ft<sup>2</sup> space in the College of Health Sciences main building and its significant equipment includes a CO<sub>2</sub> incubator, laminar flow hood and two safety cabinets, Nikon inverted fluorescence microscopy with CCD video imaging, PerkinElmer Victor3 multilabel counter (fluorescence, luminescence, absorbance), Beckman high-speed centrifuge, eppendorf centrifuge, Clinical centrifuge, TOMTEC cell harvester, Bio-Radbiologic duoflow pathfinder 20 system (HPLC), fraction collector, analytical balance, UVP imaging system with digital camera (DNA and protein gels), UV/BIS Spectrometer, vertical and horizontal electrophoresis system, Bio-Rad electrophoretic transfer system, incubator-shaker, UV-cross linker, hybridization oven, sonicator, analytical balance, pH meter, two incubator, Bio-Rad iCycler for Q-RT-PCR, Eclipse 600 microscope with digital camera, two microscopes, NanoDrop, water baths, Cholestech L-D-X, Hemoglobinometer, 4oC refrigerator and -freezers (-20oC, -70oC, -140oC) for long term storage of bacteria and cell lines, dark room for developing auto-radiographs, wash room equipped with distilled water system, autoclaves, dishwasher, storage space for chemicals and media, and a human blood draw station.

The bench laboratory is equipped for the collection, handling and processing of blood samples and is equipped to perform both clinical chemistry and immunochemistry. Equipment includes: a refrigerated Eppendorf centrifuge to separate plasma, 4 oC refrigerator, -80 oC Freezer for storing blood samples, and laminar flow hood, a Tosoh AIA 360 immuno-analyzer. Portable equipment used for field research includes Cholestech LDX portable chemistry auto-analyzer, Bayer 2000 DCA Hemoglobin A1C analyzer, Hemocue hemoglobin and glucose analyzers, stadiometers, weight balances.

**The Nutrient Analysis Laboratory** is facility is located in a 392 ft<sup>2</sup> space in the College of Health Sciences main building and is equipped for the analysis of macro- and micro-nutrient composition of food and biological samples. The equipment includes a Pekin-Elmer AAnalyst 700 atomic absorption spectrometer with graphite furnace, Goldfisch fat extractor, crude fiber apparatus, combination Kjeldahl digestion and distillation, Rapidstill 1 Microdigester, large muffle oven, lab oven, Sartorius GP5202 precision balance, Sartorius GP503 class II balance, OHAUS moisture balance, pH meter and other assorted small equipment.

**The Dietary and Sensory Analysis Laboratory** facility is located in a100 ft<sup>2</sup> space in the College of Health Sciences main building and contains desktop and portable computers used to collect and analyze dietary data using the ESHA II Food Analysis software system, NASCO food models, and other dietary assessment tools. Construction of a fully functional sensory analysis unit is planned for the near future.

**The Experimental Foods Laboratory** facility is located in a 392 ft<sup>2</sup> space in the College of Health Sciences main building and contains stainless steel storage cabinets, three mobile work tables, a landing table, four full-size range stoves with ovens, a set of double-stacked convection ovens, table-top industrial size microwave ovens, an industrial size griddle, an upright industrial freezer and upright industrial refrigerator with glass fronts, an industrial food steamer, food mixer, wire mesh shelving, food grinder, exhaust hoods, hand sink and three-compartment industrial sink

**Metabolism, Nutrition, & Exercise Research (MiNER) Laboratory** — This 2,900 ft<sup>2</sup> facility is housed in the College of Health Sciences main building. The MiNER Laboratory is comprised of eight independent rooms and a bench laboratory area facilitating a research capacity that spans from large population descriptive surveys to very complex molecular and endocrinological mechanisms of disease. This research space is highly conducive and supportive of the interdisciplinary collaborative culture of the College of Health Sciences. Major equipment available are: metabolic measurement systems, ECG systems, cardiac output systems, treadmills, cycle ergometers, underwater weighing tank, residual volume system, bioelectrical impedance analysis (BIA), Bod Pod, bone densitometer (DXA), ultrasound systems, peripheral blood flow system, and environmental chamber. Major bench laboratory equipment includes: fume hoods, high-speed refrigerated centrifuge, spectrophotometers, electrolyte analyzer, osmometer, whole blood analyzers, Tosoh AIA 360 immuno analyzer, Hemoglobin/A1C analyzer, incubators, waterbaths, and western blot and cell culture facilities.

**Kinesiology Fitness Research Facility**— This facility is located in a 2,000 ft<sup>2</sup> space of the Ross Moore building. The facility is fully equipped to conduct fitness and strength and conditioning programs and research protocols. Major equipment available in the facility includes cardiovascular training apparatus such as: treadmills, elliptical trainers, stationary bicycles; Olympic platforms with Olympic bumper set; Life Fitness resistance training machine; and Troy dumbbell sets. Other types of training equipment are: Plyometric, speed, agility, and balance training accessories; and medicine and Swiss balls.

**Stanley E. Fulton Biomechanics and Motor Behavior Laboratory** — This facility is located in a 2,000 ft<sup>2</sup> in the Larry K. Durham Building, with four additional rooms for subject interview and preparation. The Laboratory is equipped with three mounted AMTI force platforms, a portable force platform, a 4-camera Vicon Motus 3-D motion analysis system with automatic digitizing, an 8-camera Vicon MX real-time motion capture system, an 8-channel tethered EMG system, a 16-channel wireless EMG system, a Biodex isovelocitv dynamometer, a Tekscan walkway, a wireless 16-channel Clevedmed Biocapture Pro for physiological data capture, and an Applied Science Laboratories H6 high speed head mounted eye tracker with eye/head integration. Other equipment includes WorldViz 4.0 Virtual Reality Developer, an eMagin Z800 3DVisor for head mounted virtual reality display, an A395 Linear Stimulus Isolator from World Precision Instruments, a Brower timing system, a uniaxial accelerometer, a medical scale and stadiometer, reflex hammers, calipers, a treadmill and a cycle ergometer.

## CAMPBELL BUILDING LABORATORIES

**The Speech and Hearing Clinic (SHC)**— This facility occupies 3,000 ft<sup>2</sup> in the Campbell Building. This clinic is equipped for clinical and research purposes: there are four therapy rooms with one-way mirrors for observation and supervision; a three-station video lab and recording system for data collection and analysis; an audiology suite with sound-proof booth. It also includes computerized speech lab equipment and software, including videostroboscopy, nasometry, and respiratory/airflow measurement tools; eye-tracking technology; and EEG/ERP technology.

**The Concussion Management Clinic (CMC)** facility is located in a 1,000 ft<sup>2</sup> space that is part of the UTEP Speech and Hearing Clinic, located in the Campbell Building, Department of the Rehabilitation Sciences, College of Health Sciences provides the experience and expertise to properly manage post-concussion recovery. Sports related concussion management involves the latest cognitive testing instrument (ImPactTM), a well developed plan and consultation to maximize recovery. The Clinic offers baseline assessment and post-concussion assessment and treatment to assess cognitive functioning and guide recovery. The clinic is led by Dr. Anthony P. Salvatore, Chair, Department of Rehabilitation Sciences, Board Certified by the Academy of Neurologic Communication Disorders and Sciences (ANCDS), clinically certified in speech-language pathology and licensed to practice by the State of Texas

**Motor Control and Virtual Reality Research Laboratory** facility is located in a 1,000 ft<sup>2</sup> space is housed in the Campbell building. This laboratory, the first of its kind in the far west Texas/El Paso region, utilizes specialized facilities to conduct research in neurorehabilitation and the associated neurosciences, incorporating biomechanics, sensory integration, cognitive function and motor control research techniques. Virtual reality technologies provide opportunities to conduct research that support the development and evaluation of diagnostic techniques and treatments for individuals with neurological disorders such as traumatic brain injury, stroke and multiple sclerosis. The treatment of deficits in motor control, sensory function, vestibular and visual processing can be simulated using the technology and then generalized to natural, everyday situations. These technologies will also be used to understand visual-vestibular (vision/inner-ear) integration during locomotor activities and the central adaptive responses of these sensory systems. This work has direct applications to fall prevention and to restoring locomotion to frail and mobility-limited populations.

All main campus and Campbell Building laboratories have computer workstations and laptop computers with appropriate statistical, office, and specialized software available to all researchers. Other available office equipment includes photocopiers, scanners, and laser printers. Ethernet and wireless Internet access is available throughout the UTEP main campus and satellite facilities. Most laboratories are equipped with large size flat television screens and instructional video circuits available for training and research. The College of Health Sciences' Independent Learning Center and IT personnel provides hardware and software support, and access to scanners, projectors, and other computer resources.



College of Health Sciences / School of Nursing Building



College of Health Sciences Campbell Building

The University of Texas at El Paso  
College of Health Sciences  
500 W. University Ave  
El Paso, TX 79968



(915) 747-7280  
<http://chs.utep.edu/>

