



## OLLI @ UTEP

On Campus  
Miners Hall 209  
(915) 747-6280



## Your 2022 OLLI Advisory Board

Leanne von Mittenwald  
*Chair*

Karen Fraser  
*Vice Chair*  
*Volunteers*

Elizabeth Farrelly  
*Secretary*

Don Buescher  
*Finance*

Jessica Arriola  
*Events*

Gloria Barragan  
*Civic Diversity*

Mary Harris  
*Membership*

Tom Harding  
*Technology*

Helen Schmid  
*Community Advocate*

Sonya Villa-Saenz  
*EU Advisor*

Lynn Provenzano  
*Executive Director*  
*Curriculum & Marketing*

## A MESSAGE FROM THE EXECUTIVE DIRECTOR | *Embrace Change*



Change is something we can count on and we certainly have been experiencing change as we have transitioned into the opportunities presented to us through technology and the new mindsets regarding daily life. It has been a journey filled with the joys of reconnecting in social activities and classrooms and the sadness that has come with the passing of friends. Yet, we can celebrate learning, curiosity, creativity, each other, and the joys of the moment.

We can embrace change for all of the excitement and newness that it has to offer in these most interesting times. Your OLLI continues to ride the waves of change to give you a quality program that enhances your moments. Life does not stand still. Neither does OLLI. Stay tuned for more good things to come.

Lynn Provenzano

## A MESSAGE FROM THE ADVISORY BOARD CHAIR | *Thank you!*



This December, my tenure as OLLI Advisory Board Chair comes to an end. It has been an amazing experience but I could not have done it without the staff, the other board members, the instructors, the students, and the volunteers. We are so fortunate to have such a strong support system at OLLI to guide us through the changes and challenges of life.

There have always been many opportunities to become more involved through OLLI. I started as a member and student and learned how incredible it was to sit in a classroom full of people whose love of learning knew no limits. Then, as an instructor, I learned I could research and share information freely with these "older students" – without the restrictions of a gradebook or parent conferences!

The Curriculum Committee was my introduction to the intricacies of the inner world of OLLI. It was exciting to be a part of the process that included the selection of courses, the configuration of classes, and the search for new instructors and guest speakers.

A few years ago, I was asked to become a part of the Advisory Board as the Events Chair, which involved monthly potlucks and parties in the OLLI lounge. When Covid restrictions prevented us from gathering safely, we came up with new ways to stay connected – through Zoom Trivia events, outdoor get-togethers, and private movie screenings at Cinemark. Events Chair became Advisory Board Chair/Events Chair in 2020 and ended in 2022 with a lifetime of memories and experiences I will never forget.

Thank you, everyone, for your continued dedication and enthusiastic participation in classes, events, and meetings. I hope to see you in January as we open up a new and exciting chapter in The World of OLLI!

Leanne von Mittenwald

**EXTENDED  
UNIVERSITY  
(EU)**

is UTEP's hub for online and other nontraditional academic programs, professional training and education, and community enrichment. EU strives to improve access to UTEP's outstanding educational opportunities for all who seek them out. EU's component units provide educational opportunities and services to support both nontraditional students and educators interested in new modes of teaching.

**A MESSAGE FROM THE DEAN | *Time Formula***



This fall semester has certainly flown by. It's difficult to believe that Thanksgiving is to be followed by the Winter Solstice and December celebrations, and then the end of the 2022! A couple years ago, I commented to my son, who was taking a Calculus class at the time, that it's true what grandpa always says: "time passes faster as you get older." Jackson said: "Mom, you know there's a mathematical formula that explains that, right?" He went on to explain that as one accumulates more experiences, more time (read: gets older), years/months/days/hours become compressed and as a result, they seem to whiz by more rapidly than when we were younger with fewer experiences and less time (or something like that, I have a Rhetoric degree, not a math one).

There are many things going on at UTEP that contribute to that phenomenon: largest first-year student class in school history, ground breaking of the new Advanced Manufacturing and Aerospace Center, three new deans, the formation of the Diana Natalicio Institute for Hispanic Student Success, and a whole lot of important activities that support UTEP students of all ages.

While I'm not sure that this "time formula" is comforting, it is an interesting perspective that encourages us to pause and appreciate everything happening around us, even if it seems to be passing by so quickly. Formulas aside, I want to wish all OLLI members a very happy few weeks as we close out the end of 2022 and celebrate the new beginnings of 2023.

*Dr. Beth Brunk-Chavez*

**OLLI | OSHER LIFELONG LEARNING INSTITUTE**

**OUR VISION**

The Osher Lifelong Learning Institute (OLLI) at the University of Texas at El Paso aspires to be a premier membership organization for adults over the age of fifty (50) in an aging demographic through continuing education and social integration - with an expanded reach - to positively enhance mature adult lives in the El Paso Border Region.

**OUR MISSION**

The Osher Lifelong Learning Institute (OLLI) provides opportunities under the umbrella of the University of Texas at El Paso to enhance the enjoyment, meaning, and direction of all adults over the age of fifty (50); to stay connected; and to support their good health and wellness in an aging community through diverse course offerings in continuing education, social activities, volunteerism, intergenerational experiences, and any other special services.

**OLLI is dedicated to providing service to the OLLI community and welcomes new members.**

**EACH ONE . REACH ONE ... Invite friends, colleagues, and relatives to join OLLI.**

**Enjoy feeding your curiosity together!**



“**Julieta Páez Páez** was born in Parral, Chihuahua, Mexico. She was raised in Mexico City, where she attended the Universidad Motolinia and La Universidad Nacional Autónoma de México, She graduated from the Stella Viae International School in Rome, obtaining a diploma from the School of Interpreters and Translators of Rome in French.

Julieta has published three previous books: *It’s in our Genes by Granny* (2017), *Looking Back, Moving Forward* (2019) as a collaboration with other authors and *So She Said* (2021).

She has lived in the United States since 1970. A former successful realtor and civic leader, she currently devotes her time to her family and friends while writing, painting, and practicing other diverse hobbies.”

Julieta is an active OLLI member.



That scent, what was that scent?

Her childhood?

And through the years of abandonment, it had not gotten lost or faded?

What was it, the kitchen aroma escaping through the broken window? Her mother’s perfume?

Ah, perhaps some of the herbs in the garden!

All she knew was that it was a comforting smell; it felt good. She could always figure out later what it reminded her of, or whom.

She kept on walking.

When she was alone Carlotta could feel their presence, almost as if they wanted her to come back home and witness her return.

What was she to do?

From her book....

*Villa Mughetto*

Julieta Páez Páez

Angel’s Trumpet Press

C 2022



**Zita Arocha's** memoir "Guajira, the Cuba Girl", charts the journey of a Cuban American journalist to reclaim her missing past, uncover damaging family secrets and heal from the karma of exile. During some of her many return trips to the homeland, she is caught in the web of Cold War spy craft between her native land and adoptive country. Born in a small farming village outside Havana, where the locals are called guajiros, she, her parents, and a younger sister left Cuba in 1957 due to poverty. Still, they visited relatives on the island during the seismic Cuban Revolution of 1959 that later turned Communist. After a harrowing month of hiding in her grandparents' home, they were allowed to return to their new home in Tampa. For the following two decades, she was prevented from reconnecting with her family on the island because of the politically turbulent relationship between the U.S. and Cuba.

She has since returned to the island many times and now takes students on trips to learn about the history and culture of her beloved Cuba.

Zita is a current OLLI instructor and teaches classes on Cuba.



"Guajira" excerpt

Even the West Tampa bungalow I lived in as a child felt incomplete like us, a bell missing a gong. It had an aluminum-covered pitched roof, a wide front porch where my sisters and I played in the sweltering summers, and wood slat walls. Ours was one of the thousands of similar houses built for Cuban and Italian cigar-factory immigrant workers in the late 19th and early 20th Century in West Tampa and Ybor City. They were called cañones or shotgun houses because each one was the same: a front door and a back door and a series of skinny rooms in between; fire a gun or canon through the front door, and the bullet or canon ball exited out the back.

Our cañon had 1919 carved on the concrete driveway next to the porch and was less than eight blocks from the red brick Garcia y Vega cigar factory where my mother rolled cigars for a few years. My sisters and I jumped rope, played marbles, and plucked the back legs off grasshoppers in the driveway. We had an aggressive rooster and two chickens. After a neighbor complained about its crowing, Dad eventually got rid of the rooster, and I believe we ate the chickens. I returned from school one day to find the rooster gone and asked Dad where it had gone. He said he'd given it away to a farmer. I'm sure the bird ended up in Mom's sopa de pollo, just like the chickens.

Over time we remodeled the house ourselves. We covered the inside wood walls with planks of sheetrock and lowered the 14-foot ceilings—my sister, and I raised the planks of sheetrock way above our heads with long wooden poles and held them there so Dad could nail the plasterboard to the ceiling beams; we installed new aluminum windows and doors. One family project was to cover the floors with beige vinyl tiles, and I spent hours over several weeks on my knees helping Dad glue down the tiles. Later, we installed brown and tan shag carpeting in the bedrooms. Mom was proud of her modern yellow and avocado green appliances, a double oven, a cooktop, and a double-sided refrigerator from Sears.

After a pressure cooker of black beans exploded, smearing black crud over the ceiling and walls, we were able to have it repainted courtesy of the insurance company. Mom—who enjoyed rearranging tables, chairs, and sofas often—decided to divide the narrow living room and hired a handyman to build a divider. The carpenter friend built a four-foot medio punto, made to resemble a white brick wall with an opening at the top for beach sand and plastic flowers. The separation was the focal point of family portraits, including one of me dressed in a baby-pink chiffon gown and beehive hairstyle just before leaving with my first high school date to the senior prom alone with a boy. Despite the improvements and other renovations, the house remained a termite-infested shack, sweltering in the summer and cold as a freezer in the winter. I always felt provisional inside its thin walls, just a ghost passing through.



OLLI members have been generous supporters of the UTEP Food Pantry and the FHAR program (Foster Homeless Adopted Resources).



Dear OLLI,

We at the UTEP Food Pantry would like to thank you for your generous donation to the pantry. This year we have seen increases in prices at an overall, and your donation allows us to continue helping students who are trying their best to succeed. It is thanks to donations like yours that we can provide some support to students. On behalf of everyone at the pantry, we want to sincerely thank you for your on going contribution, and we hope you will continue to consider us in the future.

Sincerely,  
UTEP Food Pantry

**FOOD PANTRY**

*Thanks for being a caring community!*

### Did you know?

**Food insecurity** is associated with greater odds of having depression, anxiety, languishing, perceived need for help, loneliness, and self-injurious behaviors, adjusting for sociodemographic characteristic.

*In a study, Housing and Food Insecurity at the University of Texas at El Paso (UTEP):*

**33.5%** of student participants ate less because they did not have enough money for food.

**25.4%** of student participants didn't eat because they do not have enough money for food.

**48.6%** of student participants often and sometimes could not afford to eat balanced meals.



### Housing insecurity

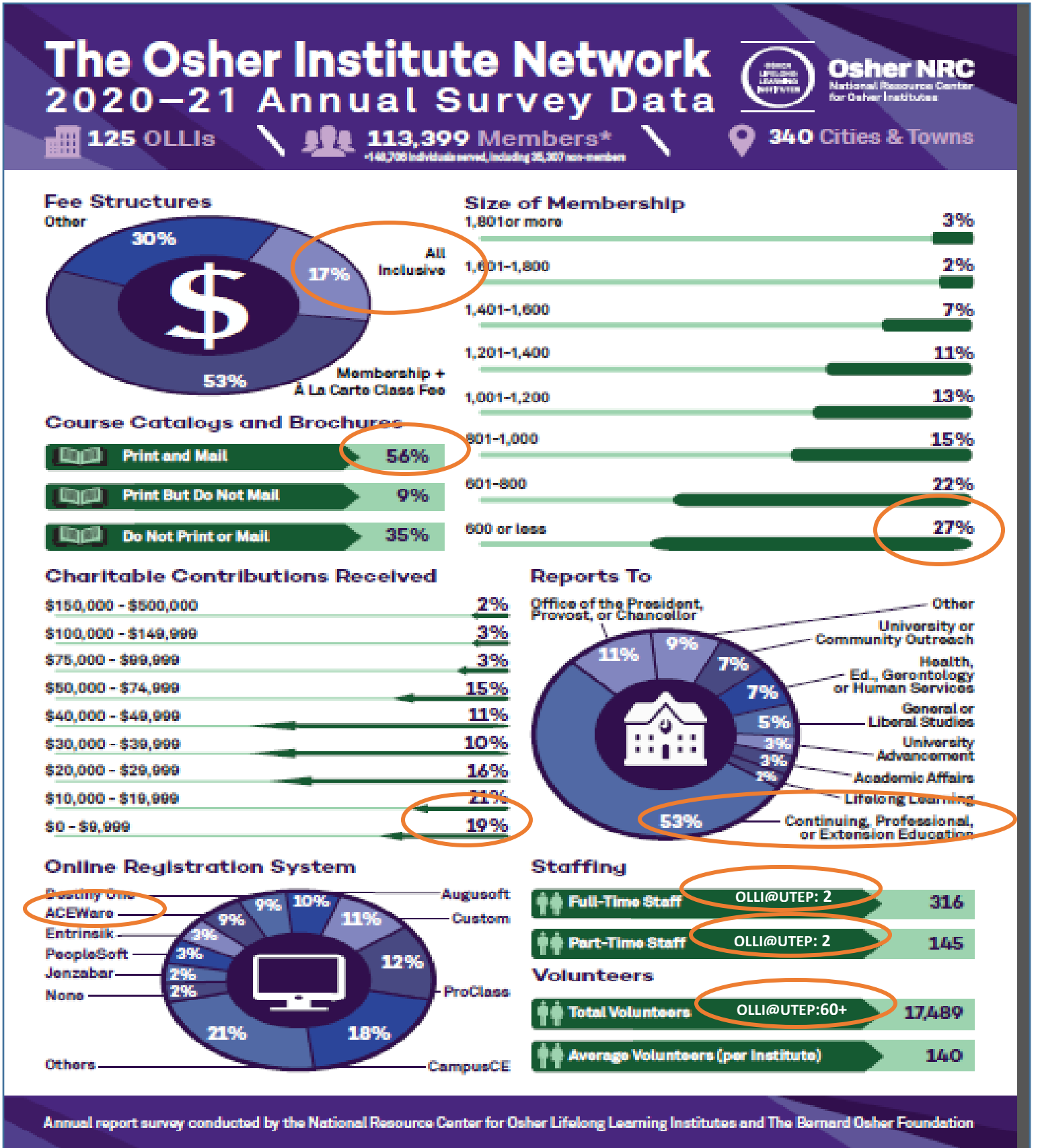
encompasses a broad set of housing challenges, including the inability to pay rent or utilities, moving frequently, loss of housing or living in an apartment or house above capacity.

**19.1%** of UTEP student participants have experienced homelessness.



**OLLI@UTEP**

Fitting into the big picture of the Osher Network.



**HOSTS**

There are many aspects to coordinating OLLI classes and clubs. The last few years have created opportunities to learn online and, as we and/transition into new norms, in-person and hybrid (online and in-person) classes. It has always been about adapting to change to best serve the OLLI membership.

**OLLI's cadre of hosts have been the backbone of classroom management.**

***Give a shout of thanks to these special OLLI volunteers!***

**Online/Hybrid**

- Jessica Arriola (classes)
- Jill Boyea (classes)
- Susie Bissell Currey (classes)
- Janet Dand (Book Club)
- Stan Deming (classes)
- Lily Dueñas (classes)
- Fred Eiland (classes & Photography Club)
- Karen Fraser (classes)
- Tom Harding (tech support-classes)
- Mary Harris (classes)
- Sylvia Portillo Koch (Italian Club)
- Marie Livingston (classes & French Club)
- Deborah Lunow (classes)
- Phyllis Price (Yoga Club)
- Don Smelser (classes)
- John Walker (classes)
- Leanne von Mittenwald (classes & Film/Wine Club)

**In-Person**

- Philip Anderson (Bridge Club)
- Bob Jacobs (Folk Guitar Club)

**OLLI Staff Support/Hosts**

- Diana Dieguez-Enriquez
- Margie Brickey
- Betzy Lira
- Lynn Provenzano

*Thank you!*

**COMMITTEES**

Advisory Board Members chair committees. OLLI members are welcome to join committees that are committed to the sustainability, growth and social aspects of the OLLI@UTEP community. These volunteers and the efforts of each committee can be found in the Advisory Board notes in this newsletter.

***Thanks to their dedication - committee members are the hands in the community that have created awareness and recognition of our OLLI program.***

**OFFICE SUPPORT**

Special thanks to those who have given time to support the office when staffing was lean and/or for being prepared for calls and service was necessary.

**Did you know...?**

The Rio Grande Cancer Foundation has been a partner with OLLI@UTEP for the last 3 years:

- Sponsoring instructors
- Sharing classes
- Sharing RGCF classrooms

RGCF is also led by a voluntary board of directors who believe in their mission and dedicate their time, talent and energy to ensuring RGCF's ability to maintain and grow their programs and services. Visit: [www.rgcf.org](http://www.rgcf.org)

Look for the RGCF logo in the OLLI catalog to see how we work together.



**RIO GRANDE  
CANCER  
FOUNDATION**

## *We appreciate our OLLI Instructors, guest speakers and collaborators!*

Several instructors and lecturers offered their time as volunteers in support of OLLI's mission during the summer and/or fall terms. Our collaborators work with UTEP's Center for Community Engagement (CCE).

### SUMMER 2022

#### **Instructors**

Jamie Ackerman  
Alfredo Arroyo  
Maximos Ayoub  
Jacqueline Cordova  
Nicolas Cooper  
Fred Eiland  
Monica Gomez  
Terrence Johnson  
John Kuberka  
Stephen Ledesma  
Jean-Claude Linossi  
Marie Livingston  
Neal Locke  
Silvia Portillo-Koch  
Linda Shubeck  
Larry Villalobos  
Viridiana Vidaña

#### **Guest Speakers**

Nancy McAfee  
Ramon Cardenas  
Marissa Testerman  
Daniel Carey-Whelan  
Renato Aguilera  
Vicky Zhuang Ph.D.  
Beto-Lopez-facilitator  
Julie Levesque  
Richard Benito  
Ben Wallis  
Adrian Dodds

El Paso Police Department

#### **Partner**

Rio Grande Cancer Foundation

### FALL 2022

#### **Instructors**

Adair Margo  
Ellen Chavez  
Jean-Claude Linossi  
Marie Livingston  
James Kubicki  
Linda Shubeck  
James Smith  
David Varela

#### **Guest Speakers**

Meredith Abarca  
David Kroese  
Gaspere Genna  
Janae Reneaud Field  
Scott Cutler  
Mary Harris  
Patricia Jablonsky  
Sangeeta Tiwari  
Jose D. Villalobos

#### **UTEP Intergenerational Projects**

Soyean Lee  
Tafari Nugent

#### **UTEP Research Projects**

Carolina Valencia  
Cecelia Fierro  
Naomi Fertman

#### **Partner**

Rio Grande Cancer Foundation

## Did you know...?



The Center for Community Engagement (CCE) serves as UTEP's resource center for faculty, staff, and students who are interested in engaging in the community through a variety of programs and activities. The CCE connects the resources of the university to help meet community priorities through maintaining healthy and mutually beneficial relationships with community partners.



10 amazing courses. Go to: <https://www.utep.edu/extendeduniversity/olli/catalog/osher-online.html>



WINTER 2023

## NEW OPPORTUNITIES TO LEARN

OSHER COURSES OFFERED NATIONALLY

Available for  
all OLLI members  
at UTEP

You are invited to  
register to the fully online  
Wintermester courses  
that  
**OSHER Online**  
will be offering  
this winter.

**Registration:**  
November 28 through  
December 12

Register online at  
[utep.edu/olli](https://www.utep.edu/olli) or call the  
OLLI office at  
**915-747-6280**  
for further assistance.

**Register early!**  
Class sizes are limited.

The Osher National Resource Center has developed a set of online courses offered at a national level that are complementary to our local OLLI programs.



### The courses

- give you access to instructors from other locations in the country
- are offered as six-weeks long courses and focus on diverse topics of interests
- are flexible to fit into your morning or afternoon schedule
- are offered fully online through Zoom
- have accessible fees (per individual course):
  - \$60 per lecture
  - \$90 per workshop

Watch the introductory videos available for each course and get to know your wintermester instructors.

The Wintermester online programming fills the gap between the Fall and Spring sessions.

Courses begin in early January  
and end in late February/early March.

*The holidays may be approaching, yet spring is in the air.  
“OLLI Opens Many Doors”*

*Catalog Front Cover watercolor by Michael Faulkner.*

## Spring 2023 Catalogs

will be landing in mailboxes in mid-December.

## Early Registration Open House

January 9 | 10am – 4pm

Gift bags for the first 50 registrants.

## *New! for Spring!*

- The Cs of El Paso History Tours
- Fitness and Fun Courses: Line Dancing and Fencing
- New Lecture Series:
  - Art & Images
  - For Goodness’ Sakes
  - Rethinking the Challenges in Aging
- Expanded Solo en Español program
- Valentine’s Day Plaza Theatre Tour
- New courses in humanities, food, art appreciation, music, mind/body and more.



## *Save the Dates!*

**December 12, 2022 | 11AM – 1:30PM | Annual Membership Meeting**

First Baptist Church – Check you mail for the invitation.

Lunch - Free Parking - Door Prizes - Annual Updates

**January 9, 2023 | 10AM – 4PM | Early Spring Registration Open House**

OLLI Lounge - UTEP Miners Hall

Gift bags for first 50 registrants – Bring a new member and be entered into raffle for a door prize.

**January 10, 2023 | Spring Registration officially opens.**

Register online, by mail, or make an appointment to meet in-person.

**February 6, 2023 | Spring classes begin**

**February 14, 2023 | 10AM | Valentine’s Day Plaza Theatre Tour**

You must be an OLLI Member to attend.

**EACH ONE. REACH ONE** Bring a new member to OLLI. Receive a \$35 credit toward your registration.

## Intergenerational Projects

This semester OLLI members were fortunate to take part in Intergenerational projects with partners on campus.

### OLLI Meets Technology and the Intergenerational UX Project | UTEP Instructor Dr. Soyeon Lee

UX refers to the user experience. This course allowed OLLI members and UTEP students to exchange ideas about the end user experience when using a product or service, when interacting with an organization and provide feedback to support UX research. UTEP students delved into the OLLI user experiences with the OLLI website, registration processes, catalog layout, QR codes, and user devices and technology. Many insights and viable suggestions will be results from this class. The best outcome is generations learning from generations.



*"The class was an interesting experience. It was clear that the students recognized how the current OLLI catalog and website could be improved. But, what was most important to me was their [the students] acknowledgment that OLLI members could give them life and career advice if only they asked. It made me feel like they wanted to hear, what I had to say about life, liberty, work (career) and the pursuit of happiness."*

Andy Mendoza, OLLI Member

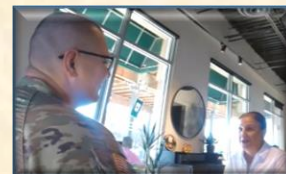
*"Participating in the UX class was a real pleasure. The intergenerational experience surpassed my expectation. The students were professional, kind and truly interested in my input. Their passion in the class and subject was evident. I would recommend this experience to all future OLLI students."*

Tom Harding, OLLI Member

### Intergenerational Meet-Up Project | UTEP Instructor Tafari Nugent

OLLI students and UTEP students were paired to get to know one another, to share and learn from their life's journey. The outcomes are videos of interviews conducted by the UTEP students.

*"I thoroughly enjoyed the interview process. It was great to know that a younger student can learn from an older, retired person, and that it might help to further her education."*



Fred Eiland, OLLI Member

## Research Participation

The Spring 2023 Lecture Series, *Rethinking the Challenges in Aging*, will feature five guest speakers who are lecturers and researchers in the field of aging. OLLI members fit into the pool of people that can help with this research – to make a difference in discovering how to ease the journey of aging. OLLI members are invited to participate in some of their research projects.

### Can we assess your pain experience?

A research study to investigate the difference in pain sensitivity and central pain mechanism between Hispanic Americans and non-Hispanic White Americans. This study consists of one testing session lasting about one hour. If you are interested, please contact Carolina Valencia, Ph.D. at [cvalencia4@utep.edu](mailto:cvalencia4@utep.edu)

### The Impact of Aging in Place on Quality of Life for Older

The purpose of this study is to gather data on the older population (65 years or older) to see what factors influence quality of life and to see how it may be improved in our community. It takes only 10 minutes to complete a short questionnaire. To participate, contact [adherhandez16@miners.utep.edu](mailto:adherhandez16@miners.utep.edu) or [cfierro6@utep.edu](mailto:cfierro6@utep.edu)

### Stroke, Exercise and Blood Flow Research

The purpose of this research study is to determine how blood flows in an artery of the neck during an incremental exercise test to determine the type of internal massage. If you had a stroke more than 90 days ago, you might qualify for this study. Contact Dr. Alvaro Gurovich at [agurovich@utep.edu](mailto:agurovich@utep.edu) or 915-747-7248 to see if you qualify. A stipend is offered for participation.

## LEANNE von MITTENWALD, Chair and Events Chair



"As Events Chair, I have always been amazed at the number of volunteers who step up whenever we need help. The OLLI Auction and Wine Event was no exception! Donors, bidders, Events Committee members and auction helpers all made it an event to remember.

- Nov. 7-Nov. 11 - Tanya von Mittenwald set up online auction for all OLLI members to bid online. Photos and details of auction items sent through email and on Facebook.
- Nov. 11 - Leanne, Jessica, and Laura set up tables and items for display at Zin Valle.
- Nov. 12 - Events Committee (Leanne, Jessica Arriola, Karen Fraser, Bonnie John) and Volunteer Helpers (Tom Harding, Mary Harris, Jill Boyea) arrived early to prepare for the auction. Guests arrived around 1:00PM to view items up for auction, eat snacks, and sample wine from Zin Valle.
- Tanya was auctioneer for the Live Auction. We had a good crowd who participated in person and a few who participated on Zoom.
- Before expenses (food, plates, etc. and gift for Ryan) we made \$1250.00.

I am happy to know that the 'Events Chair hat' will be passed to Jessica Arriola, who is perfect for this job! Jessica is enthusiastic, talented and organized. She knows her stuff when it comes to planning events. Please let her know if you have any event ideas or would like to help with upcoming events."

*Events Committee:* Jessica Arriola, Karen Fraser, Bonnie John and Leanne von Mittenwald, chair

## KAREN FRASER, Volunteers Chair



"I am happy to report that our teams of volunteers remain strong for committees, office support, 'staying connected' calls and emails, hosting for classes, facilitating clubs and serving on the Advisory Board. Our team of classroom hosts now includes Susie Bissell-Currey and new volunteer, Rosemary Neill helped distribute Grandma's Cookies during UTEP's homecoming week. Just in the past 5 months, at least 5 members have stepped up as new volunteers to fill roles and/or help complete activities. That inspires me and encourages me to continue believing that every challenge in OLLI can be conquered if we work together and long enough to solve it.

*Thank you, ALL volunteers, for helping meet those challenges."*

*Volunteer Committee:* Jill Boyea, Lily Dueñas, Oscar Estrada, Karen Fraser (chair), Tom Harding, Liz Highsmith, Julieta Páez, Don Smelser and Karen Fraser, chair

*Special Recognition for Fall 2022 office support:* Luis Castillo, Fred Eiland, Elizabeth Farrelly, Tom Harding, Helen Schmid and Susan Sobin

*Special Recognition for Fall 2022 Grandma's Cookies project:* Susie Bissell-Currey, Don Buescher, Yvonne Buescher, Lily Dueñas, Rosemary Neill, Helen Schmid, Tom Harding, Elizabeth Farrelly and Susan Sobin

*Special Recognition for Fall 2022 "staying connected" facilitators:* Karen Benuska, Georgina Berba, Don Buescher, Cille D'Ascenzo, Luis Castillo, Oscar Estrada, Elizabeth Farrelly, Mary Harris, Liz Highsmith, Pat Jablonsky, Maggie Jackson, Adria Menchaca, Donna Munch, Lori Olivas, Julieta Páez, Helen Schmid, Linda Shubeck and Susan Sobin

**DON BUESCHER, Finance Chair**



"As OLLI's Finance Chair, I provide oversight of OLLI's finances with Lynn Provenzano (OLLI Executive Director) and Sonya Villa-Saenz (College Administrative Officer of Extended University) to insure that we keep in step with the budget.

One of our current challenges/priorities is to build membership. In the meantime we are carefully reviewing expenses so we can remain healthy.

We look forward to our big Annual OLLI members' gathering on Monday, December 12<sup>th</sup> of this year."

*Finance Committee:* Lynn Provenzano, Sonya Villa-Saenz and Don Buescher, chair.

**ELIZABETH FOURZAN, Secretary (former)**



When a previous secretary of the Advisory Board resigned after a little over 2 years, we searched for a replacement. Elizabeth Fourzan offered to fill the position but now finds she needs to focus on her health and wellbeing. We will miss her caring and insights.

*Thank you, Elizabeth, for being there for us when our need was great.*

**ELIZABETH FARRELLY, Secretary**



*Welcome*

"[I]retired in 2013 following 50 years of working various positions in the medical field.

The last 25 years of my career were with Carter Blood Care in the Dallas/Fort Worth area. I began as a blood donor recruiter matching donors with certain criteria for individual patient, advancing to Operation Manager in Donor Recruitment, promoting the continual need for blood donors in the community.

Following retirement in 2013 I moved to El Paso to be closer to family. As it is El Paso is one the friendliest cities where I have lived. Soon after moving here, I received an OLLI catalog and saw an Ancestry course being offered. I enrolled and, as they say, the rest is history.

I have thoroughly enjoyed meeting fellow OLLI students and staff as well as helping as a volunteer. I am continuing to learn from the various classes offered by OLLI."

**JESSICA ARRIOLA, Events Chair**



*Welcome*

"Hi, my name is Jessica Arriola, I'm going on my second year of being an OLLI student. Born and raised in El Paso, lived in New York and Boston for over 10 years before moving back to El Paso. I am excited about being OLLI's Events Chair for I have many years of experience coordinating events and luncheons at my last job. My vision for OLLI is to bring inspiration, create fun and innovative events and ignite the opportunity for more people to become OLLI members."

## MARY HARRIS, Membership Chair



"Membership Committee meetings continued to be held the second Tuesday of every month with the exception of November 2022. Mary Harris facilitates as chair person and her term will end the last of December 2022.... Mary will continue to serve on the committee.

All of our members were especially diligent in distributing catalogs and flyers all over the El Paso/Las Cruces areas prior to the first Fall session. We reached out to many community groups, all libraries, all of the Y's, senior centers and doctors' offices, just to name a few.

We look forward to our big Annual OLLI members' gathering on Monday, December 12<sup>th</sup> of this year."

*Membership Committee:* Alda Briones, Luis Castillo, Michael Faulkner, Betty Kennedy, Sue Sobin and Waynene Spradlin, and Mary Harris, chair

*Affiliates:* Karen Fraser, Helen Schmid and Mary Ann Snider

January 2023: Helen Schmid will take over as chair

## HELEN SCHMID, Community Advocacy Chair



The "community advocate board chair's purpose is to expand knowledge of OLLI in our community by getting the word out to different parts of El Paso: Eastside, Northeast, Upper Valley, Lower Valley.

OLLI participated in the 21<sup>st</sup> Annual Aging to Perfection Expo. We also have handed out brochures and catalogs to UTEP students for their parents and grandparents. Both of these interactions received positive responses...

Each OLLI student is an advocate for OLLI - by reaching out to his/her networks. We will be happy to present our program to local service clubs: Rotary, Lions, Kiwanis, retiree get-togethers.... Contact our office if you would like us to speak to your group."

## GLORIA BARRAGAN, Civic Diversity Chair



"After retiring from the Ysleta School District, Gloria earned a doctorate from the University of Massachusetts at Amherst in the area of Social Justice. Upon her return to El Paso in 2014, she developed and led a four year voluntary mentoring program, JAMS (Jefferson Alumni Mentoring Students). From their freshman to senior year, students were exposed to different career and educational options beyond high school via field trips that included valuable debriefing and follow up sessions. Fifteen professionals from the El Paso business community, all alumni of Jefferson, were recruited to serve as mentors. On Sundays, Gloria enjoys volunteering at Socorro's unique

Bodega Loya Farms, reminiscent of her years in New England.

As OLLI's Civic Diversity Chair, Gloria's role on the Advisory Board is to expand the availability of our classes to the east El Paso area. In addition, she aims to recruit more members from El Paso's Hispanic community into our OLLI family."

*Civic Diversity Committee:* Irene Medina and Gloria Barragan, chair

**TOM HARDING, Technology Chair**



“One of the goals of OLLI is to ensure that students receive a quality educational experience while attending class whether in person or via zoom. As a result, there are a few ideas being explored to meet the needs of OLLI. Hosts will be incorporating web cameras into the hosting of many future classes. These cameras will allow students participating via zoom to see their fellow students in the classroom, but more importantly, hear the questions and comments of the students attending class in person. The inability for zoom participants to clearly hear the students in the classroom has been an ongoing issue and we at OLLI feel these webcams will address this problem.

I am also working on a step-by-step instructional guide for new and current students who may need assistance on how to download and install the zoom application, how and when to check for zoom updates and how to sign into their respective classes. I hope to have this completed soon and available for the spring session.

OLLI is here for you. Please reach out to us should you have any questions, concerns, or suggestions regarding your class experience.”

**SONYA VILLA-SAENZ, Extended University Advisor**



“Extended University would like to take a moment to express our gratitude to all of you. In a year filled with unexpected twists, you have hung in with us as we’ve worked through challenges of near constant upheaval and uncertainty.

Despite that, we couldn’t be prouder of all that we accomplished during the past year-THANK YOU, OLLI!”

**LYNN PROVENZANO, Executive Director, Marketing & Curriculum Chairs**



“The dust doesn’t settle under us at OLLI. Every report to the Advisory Board is lengthy with too many lists of projects and details to note here. We have developed a wonderful office team with Diana Dieguez-Enriquez as the office coordinator, Margie Brickey as administrative and special projects assistant, and Betzy Lira, work study student and data admin. This year’s projects have been centered around the sustainability and capacity building of our OLLI. We have secured a grant from the OSHER Foundation to support this and we have launched fundraising campaigns and monitored expenses to keep our bottom line healthy. Our goal is to continue to offer services and programming that bring positive moments to our OLLI members.

The curriculum and catalog continue to be our priorities. Raising awareness regarding our OLLI is key. As your executive director, I belong to many advisory committees on campus and in the community to give us visibility. I am also actively participating with the Osher National Resource Center on committees that develop insights that will benefit all of us in the Osher network. The Marketing and Curriculum Committees are working to build relationships that give us a strong foothold in this border region along with engaging courses, lectures and unique offers. Most of all... thanks to the membership! Wear your t-shirts and EACH ONE REACH ONE. We need all of you and your friends in our OLLI community.”

*Marketing Committee:* Mary Ann Snider, Leanne von Mittenwald, Monica Gomez and Lynn Provenzano, chair

*Curriculum Committee:* Marie Livingston, Ruth Bassett, Leanne von Mittenwald, Linda Shubeck and Lynn Provenzano, chair

*Curriculum Affiliate:* Tom Harding



Tap into clubs and special interest groups.

Join OLLI members in the Daily Stretch and catch a few moments in the Virtual Lounge.

Stay connected and meet with old and new friends.

## *Membership has its benefits!*

Receive weekly bulletins to stay connected and share your photos and stories.

Get invited to special events.

Be eligible to register for OLLI's unique courses. (Registration fees apply.)



Order through the OLLI office:  
ddieguez@utep.edu 915-747-6280  
Credit or Debit Cards



THE UNIVERSITY OF TEXAS AT EL PASO  
EXTENDED UNIVERSITY

*Do you need a gift for someone special?*

## *Give the Gift of OLLI*

**Gift an OLLI Membership introducing your someone special to the Spring and Summer semesters.**

**Your gift will be mailed with a holiday certificate, your special message, the Spring 2023 catalog, and an OLLI pen.**

**Annual Membership is \$40 and is good until August 31, 2023.**