



SPRING
2024

PROFESSIONAL AND PUBLIC PROGRAMS
**ENGLISH LANGUAGE
INSTITUTE**
Course guide



915-747-5142 | ppp.utep.edu

ENGLISH LANGUAGE INSTITUTE

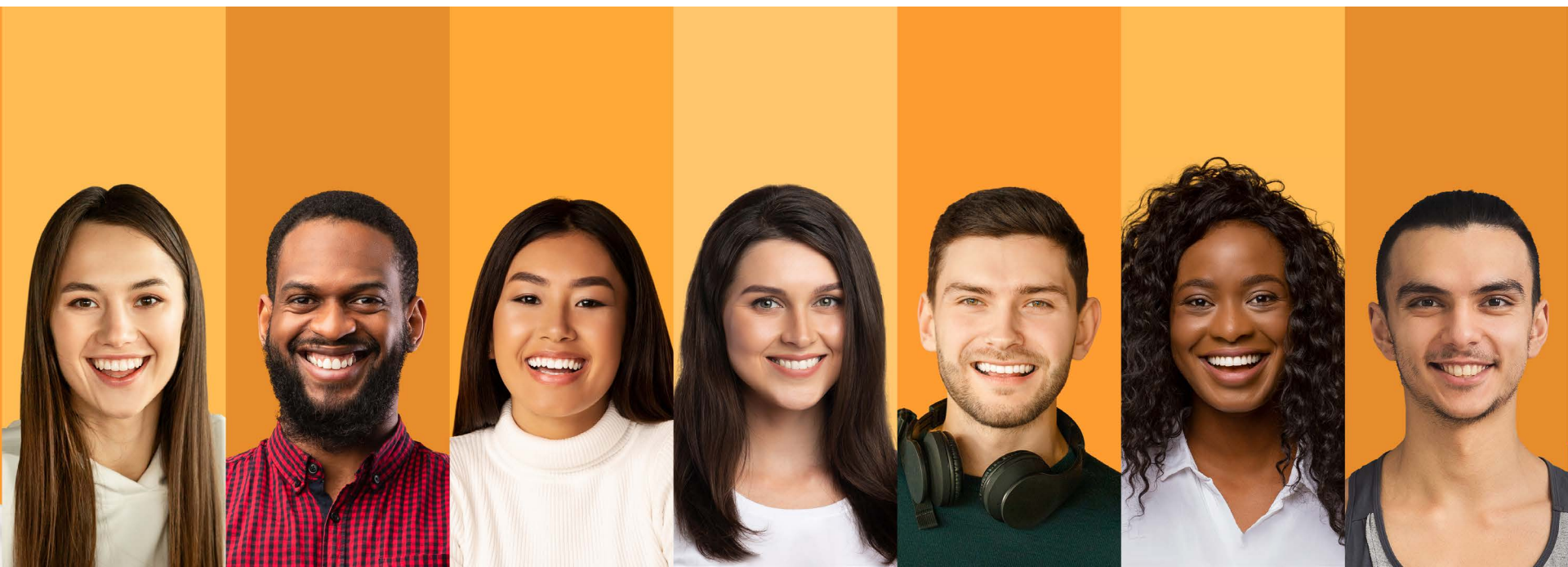
As one of the most commonly-spoken languages in the world, English is certainly useful to know. In the world of business, good written and spoken English skills can be an advantage and the TOEFL is essential for international students to be admitted into American universities. At the English Language Institute (ELI) we know that no matter what your situation, learning English as an adult can be hard. So we do everything we can to make your experience the best it can be.

Admission to the ELI program is not the same as admission to The University of Texas at El Paso (UTEP). If you wish to obtain admission to the University, you must apply directly to UTEP.

We offer a wide range of classes for English language learners at all levels for use at work, in the classroom and elsewhere. We also offer TOEFL prep for students who want to take the exam for admission to a university.

Our courses are

- taught by expert instructors to help improve your language proficiency
- organized to optimize engagement and active learning
- affordably priced



FEATURED COURSES

EVENING COURSE

TOEFL iBT Partial Preparation Course (INTERNET-BASED TEST): PT4

Prepare for the internet-based Test of English as a Foreign Language (TOEFL iBT). Study portions of the knowledge and skills evaluated by the TOEFL iBT and learn test-taking strategies.

Start Date: January 22, 2024

Fee: \$595

→ [Click here to register](#)



CONTACT OUR TEAM



BY PHONE

Call 915-747-5142,
Monday–Friday, 8 a.m.–5 p.m.



BY EMAIL

Email us at p3lang@utep.edu

For registration procedures and additional information, please email us at ppp@utep.edu with the subject line “ELI application information request,” or visit us at ppp.utep.edu/elicourses

See page 7 for ELI’s 2023–2024 Calendar and Fees.

For details, visit
ppp.utep.edu/elicourses

Ask about our
ELI Referral Program.

ELI CUSTOMIZED PROGRAMS

ELI can design customized programs for sponsoring agencies, government entities, educational institutions and/or private companies to meet specific training needs and goals. We can also plan and teach group courses that are four weeks to six months in length at any time of the year. We would be pleased to put together a targeted English language program specifically designed for your group. For more details, contact the ELI Program Manager at p3lang@utep.edu.

How to enroll in the English Language Institute:

1

Pick the course(s) you want and contact us at p3lang@utep.edu.

2

After a brief consultation with us to ensure you are getting exactly the courses you want, you'll proceed to complete the application form and pay your fees.

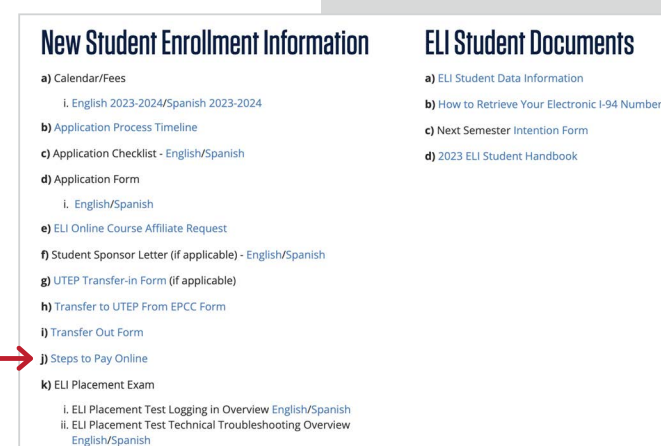
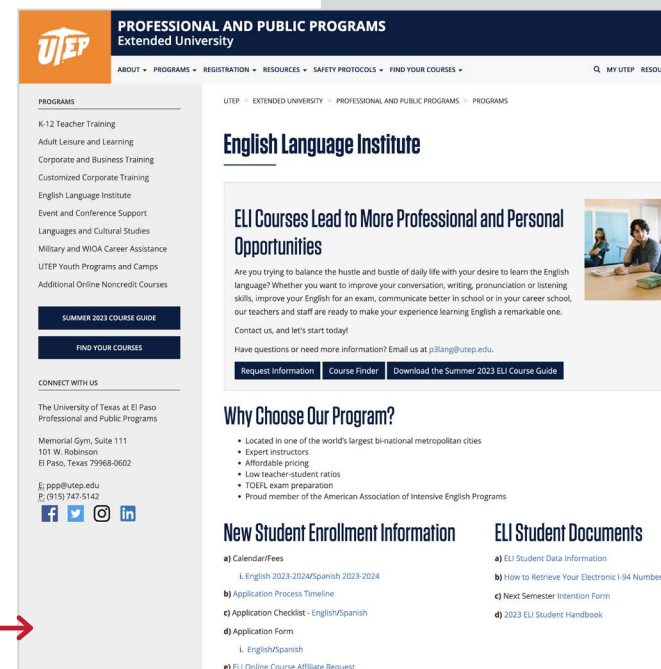
To do this, go to the **ELI web page**, and scroll down to “New Student Enrollment Information.”

- **Fill out the application form:**

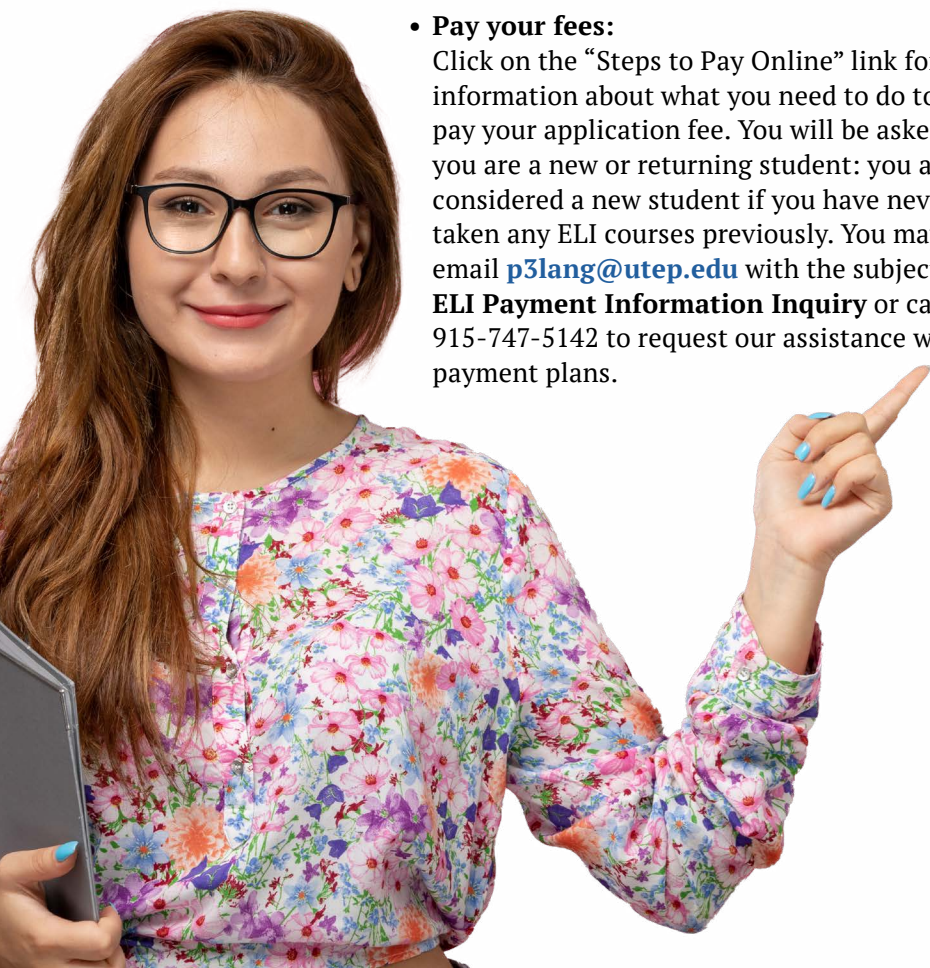
Go to “Application Form” and click on the link, then complete and submit the application form and supporting documents. **Note:** International participants must have an F-1 visa to attend the English Language Institute’s in-person classes.

- **Pay your fees:**

Click on the “Steps to Pay Online” link for information about what you need to do to pay your application fee. You will be asked if you are a new or returning student: you are considered a new student if you have never taken any ELI courses previously. You may also email p3lang@utep.edu with the subject line: **ELI Payment Information Inquiry** or call 915-747-5142 to request our assistance with payment plans.



- After your application is processed, you will receive an email on the status of your application from ELI within 5 to 14 days.



3

Some of our courses require a placement test. The placement test is used to determine your level of English proficiency in the course you want to take. You will be tested in grammar, reading, listening, writing, typing and speaking. Based on your results you will be placed into your initial, appropriate starting level for each of these courses: Grammar, Reading, Writing, and Listening and Speaking. This placement test cannot be scheduled unless all relevant fees are paid beforehand.

If a placement test is required for the course you want to take, here's what you need to know:

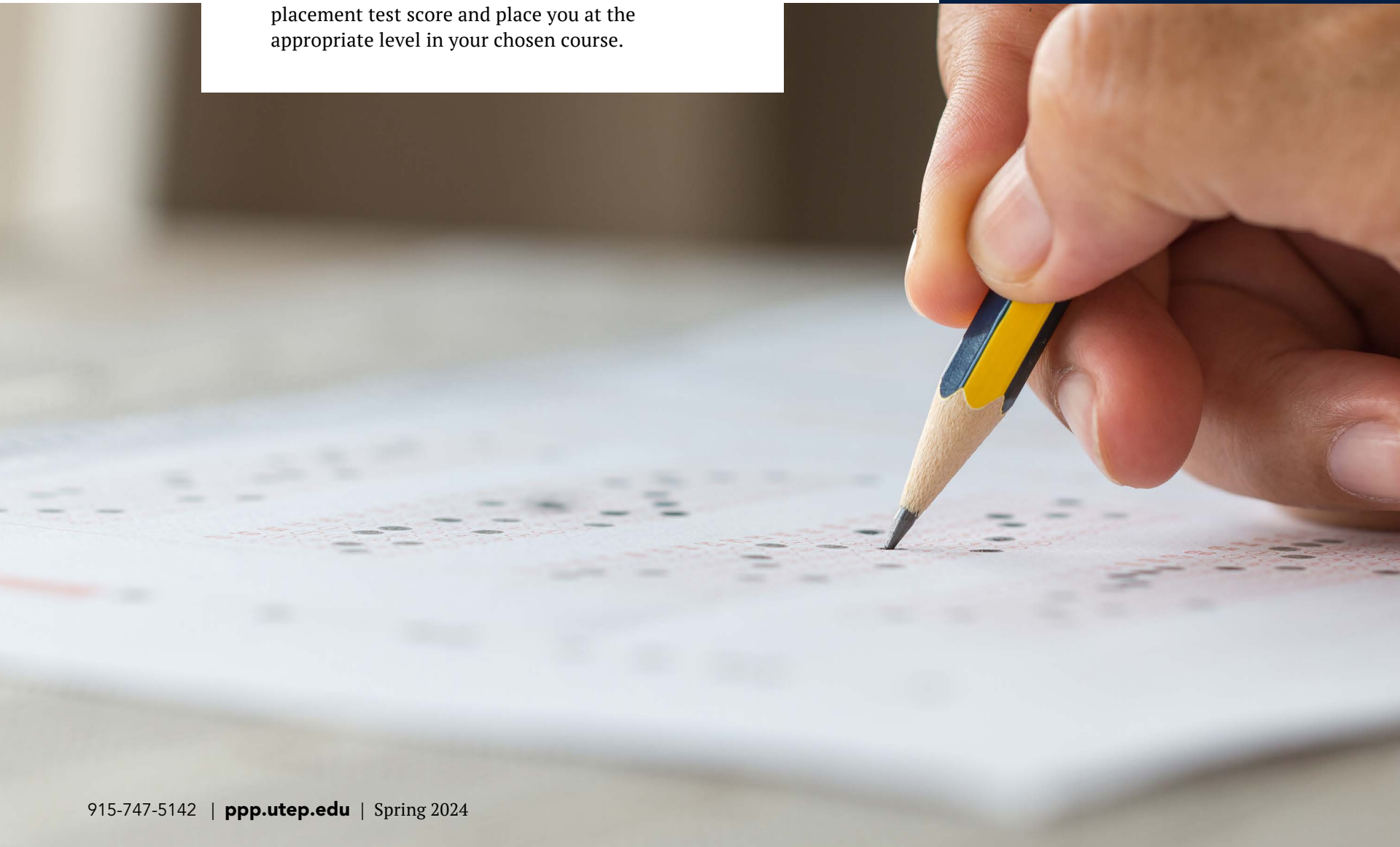
- After the application fee has been received, ELI staff will contact you to schedule a placement test.
- If you are a returning student, you may not retake the placement to try and place at a higher level the following term. Anyone who has been away from the ELI program for six months is required to retest.
- After the test, ELI staff will advise you on your placement test score and place you at the appropriate level in your chosen course.

Admission to the ELI program is not the same as admission to The University of Texas at El Paso (UTEP). If you wish to obtain admission to the University, you must apply directly to UTEP.



See pages 8-13 to view available courses for Spring 2024.

For details, visit
ppp.utep.edu/elicourses



FAQS

How many levels are there?

There are seven levels (Foundation to Level 6). At Level 6, the paper-based TOEFL exam will be administered. You must attain a score of 550 or higher on the TOEFL to graduate from the Institute.

How many credits can I get?

English Language Institute courses are noncredit.

How long does it take to complete the program?

Your progression between each level depends on your language proficiency. Students can spend just three months or up to a maximum of six months on one level.

What is the minimum age to enroll?

Given the adult academic nature of the courses, we consider an ideal enrollment age to be sixteen or above.

What are the prerequisites?

There are no prerequisites to enroll. International participants must have an F-1 visa to attend the English Language Institute's in-person classes.

Do I have to take the placement test?

Yes, the placement test is administered to establish your English proficiency and place you at the appropriate level.

Is there conditional admission to UTEP?

There is no conditional admission to UTEP; i.e., enrollment in ELI does not constitute an admission to UTEP.

Why do I need health insurance?

Medical services and medicine in the U.S. are very costly. Therefore, participants who are physically in the United States are required to have medical insurance coverage while they are enrolled in classes.



CALENDAR AND FEES

SPRING 2024-FALL 2024

*ELI courses will be in person for Spring 2024. Please visit www.ppp.utep.edu/eli for more information and links to documents you may need.



You must be 16 or older to register for our English Language Institute courses, except where otherwise indicated.

| | 2024 | | | | | |
|-----------------|---|------------------|------------------|-------------------|------------------------|--------------------------|
| | SPRING I | SPRING II | SUMMER I | SUMMER II | FALL I | FALL II |
| Course Sessions | January 16 - March 7 | March 18 - May 9 | May 28 - June 28 | July 9 - August 2 | August 19 - October 10 | October 21 - December 12 |
| Placement Test | Please contact us at p3lang@utep.edu to set up your placement test after paying the application fee. | | | | | |
| Orientation | Orientation will take place one week before the start of the session. | | | | | |

| CORE PROGRAM FEES - Includes all 4 Modules and Placement Tests* | | | | | | |
|---|---------|---------|---------|-------|---------|---------|
| Application Fee | \$125 | \$125 | \$125 | \$125 | \$125 | \$125 |
| CORE Program Fees | \$1,290 | \$1,290 | \$1,010 | \$810 | \$1,290 | \$1,290 |
| Mandatory Books Estimated Fees | \$200 | \$200 | \$200 | \$200 | \$200 | \$200 |

| INDIVIDUAL MODULE FEES | | | | | | |
|------------------------|-------|-------|-------|-------|-------|-------|
| Module Fees | \$355 | \$355 | \$415 | \$360 | \$355 | \$355 |

| WEEKDAY ELECTIVES | | Extended Courses | Fees |
|-------------------|-------------|---------------------------|-------|
| | 6-7:30 p.m. | English Conversation | \$160 |
| | 6:30-8 p.m. | Extended English Program | \$250 |
| | 6-8 p.m. | TOEFL Partial Preparation | \$595 |

| WEEKEND ELECTIVES | | Courses | Fees |
|-------------------|-------------|-------------------------------|-------|
| | 9 a.m.-noon | Focus on Business English | \$250 |
| | 9 a.m.-noon | Extended English Program | \$250 |
| | 9 a.m.-noon | Extended English Conversation | \$250 |
| | 9-11 a.m. | TOEFL Partial Preparation | \$595 |

FACE-TO-FACE COURSES

All the following courses are offered face-to-face for ages 16 and older.

INTENSIVE CORE

Intensive English Program

SPRING I 2024

Gain a functional command of English grammar, listening, speaking, reading and writing; for all student levels.

Start Date: January 16, 2024

Fee: \$1,290

Application Fee: \$125

→ Click here to register

Intensive English Program

SPRING II 2024

Gain a functional command of English grammar, listening, speaking, reading and writing; for all student levels.

Start Date: March 18, 2024

Fee: \$1,290

Application Fee: \$125

→ Click here to register

Connect with us!

Join our LinkedIn community!



Intensive Grammar

Develop proper grammar usage and prepare for academic paragraph- and essay-writing.

Note: A placement test will be administered.

Start Date: January 16, 2024

Fee: \$355

Application Fee: \$125

→ Click here to register

Start Date: March 18, 2024

Fee: \$355

Application Fee: \$125

→ Click here to register

Intensive Listening and Speaking

Learn how to do everyday things such as taking notes during class and carrying on a short conversation with ease.

Start Date: January 16, 2024

Fee: \$355

Application Fee: \$125

→ Click here to register

Start Date: March 18, 2024

Fee: \$355

Application Fee: \$125

→ Click here to register

Intensive Reading

Read fiction and non-fiction and develop your reading skills with an emphasis on speed, vocabulary expansion, and comprehension and analysis of ideas; for all reading levels.

Start Date: January 16, 2024

Fee: \$355

Application Fee: \$125

→ Click here to register

Start Date: March 18, 2024

Fee: \$355

Application Fee: \$125

→ Click here to register



ELI Summer II students from La Universidad de Nuevo Leon, Mexico.



You **must be 16 or older** to register for our English Language Institute courses, except where otherwise indicated.

INTENSIVE CORE (CONT.)

Intensive Writing

Develop your vocabulary and practice writing with a clear style; for ESL students.

Start Date: January 16, 2024

Fee: \$355

Application Fee: \$125

→ [Click here to register](#)

Start Date: March 18, 2024

Fee: \$355

Application Fee: \$125

→ [Click here to register](#)

TOEFL iBT Preparation Course

(INTERNET-BASED TEST)

Prepare for the internet-based Test of English as a Foreign Language (TOEFL iBT).

Start Date: January 16, 2024

Fee: \$1,290

Application Fee: \$125

→ [Click here to register](#)

Start Date: March 18, 2024

Fee: \$1,290

Application Fee: \$125

→ [Click here to register](#)

EVENINGS

English Conversation: Beginners

Study the basics of English pronunciation and learn the essential vocabulary for various academic subjects and phrases to use in simple conversations.

BEGINNERS - BG4

Start Date: January 22, 2024

Fee: \$160

ELI Placement Test: \$49

→ [Click here to register](#)

BEGINNERS - BG5

Start Date: March 4, 2024

Fee: \$160

ELI Placement Test: \$49

→ [Click here to register](#)

BEGINNERS - BG6

Start Date: April 22, 2024

Fee: \$160

ELI Placement Test: \$49

→ [Click here to register](#)

English Conversation: Intermediate

Improve your English conversation skills with simple idioms, role-playing and public speaking.

INTERMEDIATE - IM4

Start Date: January 22, 2024

Fee: \$160

ELI Placement Test: \$49

→ [Click here to register](#)

INTERMEDIATE - IM5

Start Date: March 4, 2024

Fee: \$160

ELI Placement Test: \$49

→ [Click here to register](#)

INTERMEDIATE - IM6

Start Date: April 22, 2024

Fee: \$160

ELI Placement Test: \$49

→ [Click here to register](#)

“If you really want to learn English, come to ELI at UTEP. It’s amazing how you learn to communicate with others, the teachers are dynamic and very patient. They motivate you to communicate in English and correct your pronunciation so you sound like a true native. What I liked most about the course was the accessibility of the schedules, the facilities and the preparation of the teachers, I really recommend this institution for learning English.”

- Gabriela F., ELI Student



EVENINGS (CONT.)

English Conversation: Advanced

Practice conversation, improve your vocabulary and presentation skills, and build on your ability to discuss current affairs.

ADVANCED - ADV4

Start Date: January 23, 2024

Fee: \$160

ELI Placement Test: \$49

→ [Click here to register](#)

ADVANCED - ADV5

Start Date: March 5, 2024

Fee: \$160

ELI Placement Test: \$49

→ [Click here to register](#)

ADVANCED - ADV6

Start Date: April 23, 2024

Fee: \$160

ELI Placement Test: \$49

→ [Click here to register](#)

Extended English Program: Beginners

Focus on reading, writing, and grammar, in addition to the English pronunciation skills needed for daily conversation; for beginning students.

BEGINNERS - BG4

Start Date: January 22, 2024

Fee: \$275

ELI Placement Test: \$49

→ [Click here to register](#)

BEGINNERS - BG5

Start Date: March 4, 2024

Fee: \$275

ELI Placement Test: \$49

→ [Click here to register](#)



You **must be 16 or older** to register for our English Language Institute courses, except where otherwise indicated.

BEGINNERS - BG6

Start Date: April 22, 2024

Fee: \$275

ELI Placement Test: \$49

→ [Click here to register](#)

Extended English Program: Intermediate

Build on the beginner program and gain greater proficiency in listening, speaking, reading, and writing.

INTERMEDIATE - IM4

Start Date: January 22, 2024

Fee: \$275

ELI Placement Test: \$49

→ [Click here to register](#)

INTERMEDIATE - IM5

Start Date: March 4, 2024

Fee: \$275

ELI Placement Test: \$49

→ [Click here to register](#)

INTERMEDIATE - IM6

Start Date: April 22, 2024

Fee: \$250

ELI Placement Test: \$49

→ [Click here to register](#)

TOEFL iBT Partial Preparation Course (INTERNET-BASED TEST)

Prepare for the internet-based Test of English as a Foreign Language (TOEFL iBT). Study portions of the knowledge and skills evaluated by the TOEFL iBT and learn test-taking strategies.

PT4

Start Date: January 22, 2024

Fee: \$595

→ [Click here to register](#)

PT5

Start Date: March 4, 2024

Fee: \$595

→ [Click here to register](#)

PT6

Start Date: April 22, 2024

Fee: \$595

→ [Click here to register](#)

Connect with us!

Join our Facebook community!



You **must be 16 or older** to register for our English Language Institute courses, except where otherwise indicated.

WEEKENDS

Extended English Conversation: Beginners

Learn how to improve your conversational English skills, including pronunciation and listening.

BEGINNERS - BG2

Start Date: January 20, 2024

Fee: \$250

ELI Placement Test: \$49

→ [Click here to register](#)

BEGINNERS - BG3

Start Date: April 6, 2024

Fee: \$250

ELI Placement Test: \$49

→ [Click here to register](#)

Extended English Conversation: Intermediate

Improve your English conversation skills by expanding your vocabulary, improving your pronunciation and acquiring a better, more complex syntax.

INTERMEDIATE - IM2

Start Date: January 20, 2024

Fee: \$250

ELI Placement Test: \$49

→ [Click here to register](#)

INTERMEDIATE - IM3

Start Date: April 6, 2024

Fee: \$250

ELI Placement Test: \$49

→ [Click here to register](#)

“ I like the quality of
the teachers”

- ELI Student, Spring 2023

Extended English Program: Beginners

Obtain an understanding of the English language through listening, speaking, reading and writing.

BEGINNERS- BG2

Start Date: January 20, 2024

Fee: \$250

ELI Placement Test: \$49

→ [Click here to register](#)

BEGINNERS- BG3

Start Date: April 6, 2024

Fee: \$250

ELI Placement Test: \$49

→ [Click here to register](#)

Extended English Program: Intermediate

Build on the beginner program and gain greater proficiency in listening, speaking, reading and writing.

INTERMEDIATE - IM2

Start Date: January 20, 2024

Fee: \$250

ELI Placement Test: \$49

→ [Click here to register](#)

INTERMEDIATE - IM3

Start Date: April 6, 2024

Fee: \$250

ELI Placement Test: \$49

→ [Click here to register](#)

Focus on Business English: Advanced

Polish your English listening and speaking skills for use in a business environment.

ADVANCED - ADV2

Start Date: January 20, 2024

Fee: \$250

ELI Placement Test: \$49

→ [Click here to register](#)

ADVANCED - ADV3

Start Date: April 6, 2024

Fee: \$250

ELI Placement Test: \$49

→ [Click here to register](#)

TOEFL iBT Partial Preparation Course (INTERNET-BASED TEST)

Prepare for the internet-based Test of English as a Foreign Language (TOEFL iBT).

TF2

Start Date: January 20, 2024

Fee: \$595

ELI Placement Test: \$49

→ [Click here to register](#)

TF3

Start Date: April 6, 2024

Fee: \$595

ELI Placement Test: \$49

→ [Click here to register](#)



LIVE/ONLINE COURSES

The following courses are offered live/online using MS Teams for ages 16 and older.

WEEKENDS

Extended English Program - Beginners

Obtain an understanding of the English language through listening, speaking, reading and writing.

BG2

Start Date: January 20, 2024

Fee: \$250

ELI Placement Test: \$49

→ [Click here to register](#)

BG3

Start Date: April 6, 2024

Fee: \$250

ELI Placement Test: \$49

→ [Click here to register](#)

Extended English Program - Intermediate

Build on the beginner program and gain greater proficiency in listening, speaking, reading and writing.

IM2

Start Date: January 20, 2024

Fee: \$250

ELI Placement Test: \$49

→ [Click here to register](#)

IM3

Start Date: April 6, 2024

Fee: \$250

ELI Placement Test: \$49

→ [Click here to register](#)

Talk to us!

Professional and Public Programs is always looking to improve itself.

We would like to hear from you and see how our ELI spring courses are working for you.

Join our LinkedIn community or post a comment on our Facebook page.





ONLINE COURSES

The following courses are offered online for ages 16 and older, unless otherwise indicated.



Grammar for ESL

Prepare for mainstream English classes as a non-native speaker.

Instructor-Led*

Start date: December 13, 2023

→ [Click here to register](#)

Start date: January 17, 2024

→ [Click here to register](#)

Self-Paced

Start date: Anytime

→ [Click here to register](#)

Writing for ESL

Learn to write clearly, logically and cohesively in any academic or work setting.

Instructor-Led*

Start date: December 13, 2023

→ [Click here to register](#)

Start date: January 17, 2024

→ [Click here to register](#)

Self-Paced

Start date: Anytime

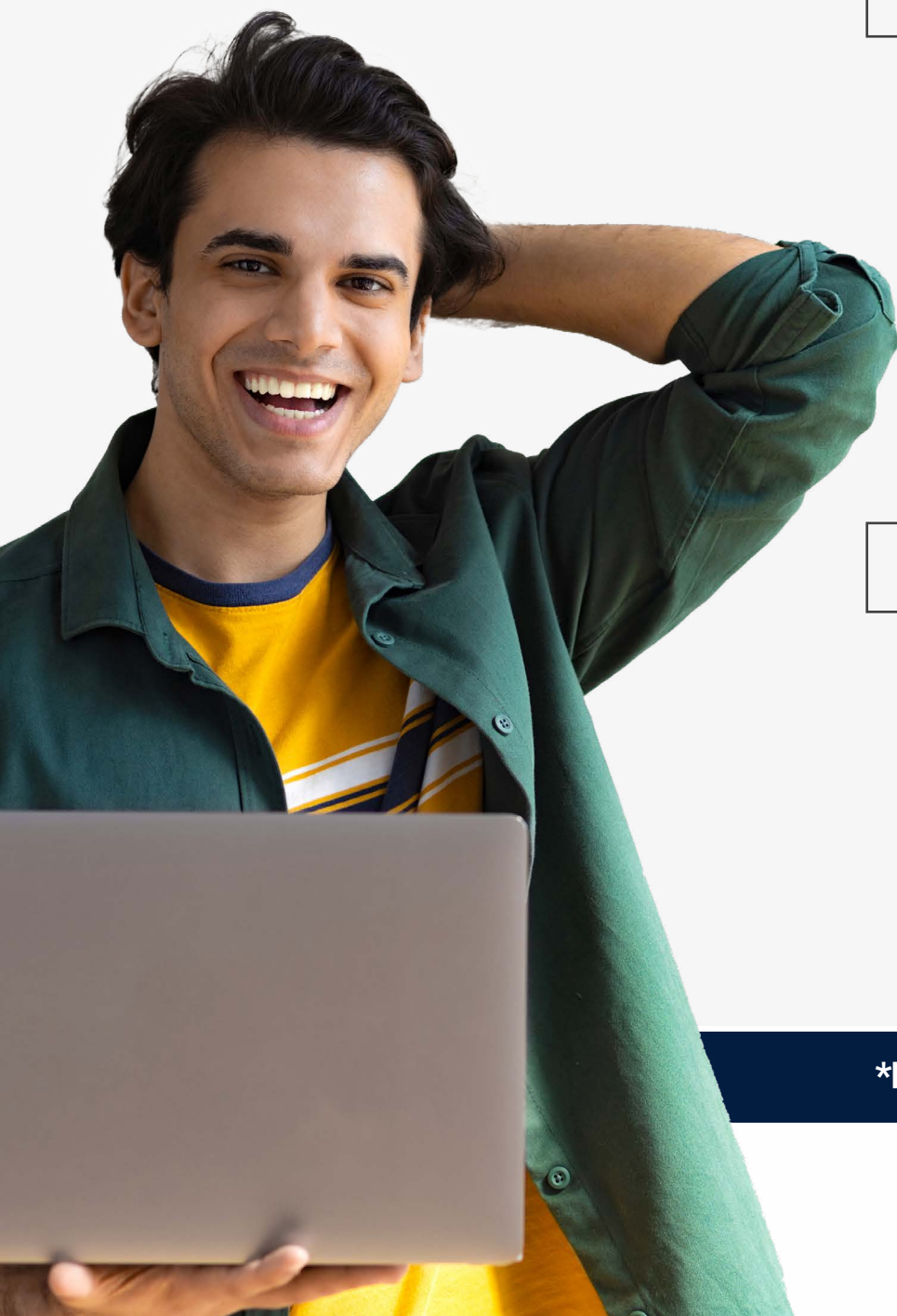
→ [Click here to register](#)

Pricing for the courses on this page is available on the course website; simply follow the “Click here to register” link under each course description to get more information.

Note: *Additional course dates may be available, please check the links for details.

English Language Institute

REFUND REQUESTS



Refund request received within 3 days or more prior to the first class*

- **Refund** will be issued
- **ELI Core Course** - Participants will be issued a full refund of the course fee, minus a \$75 processing fee.
- **ELI Evening/Weekend Course** - Participants will be issued a full refund of the course fee, minus a \$15 processing fee.

Refund Request received less than 3 days before the first class*

- **Credit voucher** will be issued
- **ELI Core Course** - Participants will be issued a credit voucher for the course fee, minus a \$75 processing fee.
- **ELI Evening/Weekend Course** - Participants will be issued a credit voucher for the course fee, minus a \$15 processing fee.

*No refunds will be issued after course start date.

WE ARE HIRING INSTRUCTORS

Join our team!

To learn more about becoming a
Professional and Public Programs instructor*
call us at **915-747-5142** or email **ppp@utep.edu**



UTEP
**PROFESSIONAL AND
PUBLIC PROGRAMS**
EXTENDED UNIVERSITY

**Must create own curriculum and course syllabus.*

COVID-19 PRECAUTION STATEMENT

Please stay home if you have been diagnosed with COVID-19 or are experiencing COVID-19 symptoms. If you have tested positive for COVID-19, prior to, after, and/or during your time enrolled in your course(s), you are highly encouraged to report your results to **COVIDACTION@utep.edu** as well as to let our office know at **ppp@utep.edu**.

The Center for Disease Control and Prevention recommends that people in areas of substantial or high COVID-19 transmission wear face masks when indoors in groups of people.

*The best way that we can take care of ourselves and others is to get the vaccine. If you still need the vaccine, it is widely available in the El Paso area. For more information about the current rates, testing, and vaccinations, please visit **epstrong.org**.*



Wash your
hands often



Use tissue when
cough/sneeze



Wear a face mask
if you are sick



Avoid close contact with
people who are sick

Professional and Public Programs – English Language Institute COURSE INDEX

FACE-TO-FACE COURSES

INTENSIVE CORE

Intensive English Program

Spring I 2024

Spring II 2024

Intensive Grammar

Start Date: January 16, 2024

Start Date: March 18, 2024

Intensive Listening and Speaking

Start Date: January 16, 2024

Start Date: March 18, 2024

Intensive Reading

Start Date: January 16, 2024

Start Date: March 18, 2024

Intensive Writing

Start Date: January 16, 2024

Start Date: March 18, 2024

TOEFL iBT Preparation Course

(Internet-Based Test)

Start Date: January 16, 2024

Start Date: March 18, 2024

EVENINGS

English Conversation

Beginners - BG4

Beginners - BG5

Beginners - BG6

Intermediate - IM4

Intermediate - IM5

Intermediate - IM6

Advanced - ADV4

Advanced - ADV5

Advanced - ADV6

Extended English Program

Beginners - BG4

Beginners - BG5

Beginners - BG6

Intermediate - IM4

Intermediate - IM5

Intermediate - IM6

TOEFL iBT Partial Preparation Course

(Internet-based Test) PT4

(Internet-based Test) PT5

(Internet-based Test) PT6

WEEKENDS

Extended English Conversation

Beginners - BG2

Beginners - BG3

Intermediate - IM2

Intermediate - IM3

Extended English Program

Beginners - BG2

Beginners - BG3

Intermediate - IM2

Intermediate - IM3

Focus on Business English

Advanced - ADV2

Advanced - ADV3

TOEFL iBT Partial Preparation Course

(Internet-Based Test) TF2

(Internet-Based Test) TF3

LIVE/ONLINE COURSES

Extended English Program

Beginners - BG2

Beginners - BG3

Intermediate - IM2

Intermediate - IM3

ONLINE COURSES

Grammar for ESL

Instructor-Led*

Start date: December 13, 2023

Start date: January 17, 2024

Self-Paced

Start date: Anytime

Writing for ESL

Instructor-Led*

Start date: December 13, 2023

Start date: January 17, 2024

Self-Paced

Start date: Anytime

Note: *Additional course dates may be available, please check the links for details.



EDUCATION THAT FITS YOUR **LIFESTYLE!**

100% online degrees from UTEP

All the online programs offered are of the same great quality and academic rigor as face-to-face degree programs and are taught by the same faculty who teach on-campus courses.

Pick the program you're interested in and [fill out a form](#) or call us. We promise you won't be disappointed!

APPLY NOW!

Have questions? Contact us today.

utepconnect.utep.edu

1-800-684-UTEP

Scan QR code
for more information.





UTEP
PROFESSIONAL AND
PUBLIC PROGRAMS
EXTENDED UNIVERSITY

CONTACT US



ONLINE

Visit us at ppp.utep.edu



BY EMAIL

Email us at p3lang@utep.edu



BY PHONE

Call 915-747-5142,
Monday–Friday, 8 a.m.–5 p.m.

Connect with us to receive special offers,
updates on courses and more!



UTEP.P3



UTEP_P3



UTEP.P3



UTEP-P3

Graphic design by Claudia Cornejo and Kimberly Guerrero

Writing/editing by Arathi Kylasam

All photos used in this publication are courtesy of UTEP's Division of Marketing and Communications and Extended University's Marketing Department

Photo and vector stock courtesy of ed2go.com, freepik.com, jeshoots.com, pexels.com, pixabay.com, rawpixel.com, unsplash.com and vecteezy.com

DISCOVER YOUR POTENTIAL

CONTINUING EDUCATION AT UTEP

ENGLISH LANGUAGE INSTITUTE AND LANGUAGES AND CULTURAL STUDIES



Socorro Herrera

Program Manager

Socorro (Soco) began her career at UTEP in 2003 as a part-time customer service representative with PACE, which was the name of Professional and Public Programs at that time.

She was born and raised in Ciudad Juárez, Mexico, and moved to El Paso in 1995. She holds a Bachelor in Business Administration with a Minor in Finance from the Instituto Tecnológico de Ciudad Juárez.

Soco strives to provide excellence through accessible programs that positively impact the well-being of the community. She is a current, active member of the UTEP Staff Council, and a proud mother of two children and several four-legged fur babies.

Favorite inspirational quote: "You're alive. That means you have infinite potential. You can do anything, make anything, dream anything." – Neil Gaiman



SPRING 2024 COURSE GUIDE