

PROFESSIONAL AND PUBLIC PROGRAMS  
**LANGUAGES AND  
CULTURAL STUDIES**

**Spring  
2026**  
*course guide*





## PROFESSIONAL *and* PUBLIC PROGRAMS

We are a unique learning agent within The University of Texas at El Paso. Our mission is to provide high-quality continuing education. This includes nontraditional academic and lifelong learning opportunities for professional development, personal enrichment and academic growth. We foster and support the larger University mission to serve as a gateway to an improved quality of life for people of the Paso del Norte Region.

## OUR VISION

Professional and Public Programs will be the premier provider of comprehensive, quality, educational, professional and personal enrichment programs in collaboration with UTEP departments and external organizations.



SAVE WITH OUR

**EARLY BIRD**  
**10% DISCOUNT\***

**Receive 10% off eligible courses each semester when you register early.**

**For spring courses, enroll by December 15.**

**Don't miss your chance to save with this limited-time offer each semester!**

## Scan the QR Code

for each semester's deadlines and other available discounts.

**Don't miss your chance to save!**



\*Discounts do not apply to certain programs, including but not limited to: English Language Institute Core Program, aquatics courses and online courses offered in partnership with third parties. Discounts outlined here may not be combined with any other discounts.

## Can't come to us? We'll come to you!

Professional and Public Programs serves as UTEP's resource for community members interested in engaging in continuing education through a variety of noncredit programs and certifications. Through collaboration, partnership and mutually beneficial relationships, we help provide continuing education, resources and assistance to our community.

If you would like to partner with us, please contact Socorro Herrera, Program Manager for Community Outreach and Marketing at **915-747-5106** or via email at **p3ce@utep.edu** or **sherrera1@utep.edu**.





# LANGUAGES & CULTURAL STUDIES



Professional and Public Programs knows that language skills are a valuable tool for advancement. Learning a new language is a fun, useful way to keep your brain sharp and expand your knowledge of other cultures, places and people. Learning a new language with us is

- Affordable and convenient
- Fun and engaging
- An opportunity to learn, network and build confidence

Classes are available for French, Italian, Japanese, Korean, Portuguese, Spanish and more.

*Course content may vary depending on the instructor and participants, allowing for a stress-free and flexible approach to learning new language skills.*

## GUIDE INDEX

Click a section to view courses.

### ► Face-to-Face Courses

See pages 6-8

### ► Live/Online Courses

See page 9

### ► Online Courses

See pages 10-13

For course index, go to **page 15**.

# CONTACT OUR TEAM



## BY PHONE

Call 915-747-5142,  
Monday–Friday, 8 a.m.–5 p.m.



## BY EMAIL

Email us at  
[p3lang@utep.edu](mailto:p3lang@utep.edu)

See pages 6-13 of this course guide for a list of available courses for Spring 2026.

For additional information or to register, go to  
[ppp.utep.edu/languages](http://ppp.utep.edu/languages)

## UTEP Employees and Retirees Discounts

Current and retired UTEP employees may receive **15% discount** on eligible courses\*.

\*Discounts do not apply to certain programs, including but not limited to: The English Language Institute Core Program and online courses. Discounts outlined here may not be combined with any other discounts.



## Refund Policies

Refund policies are available at  
[ppp.utep.edu/refund-policy](http://ppp.utep.edu/refund-policy)

# FEATURED COURSES

## FACE-TO-FACE COURSES FRENCH

### Intensive French Program for Beginners

Designed for students with no previous exposure to French. Develop basic listening, speaking, reading and writing skills at the novice-high level. This is an introductory course for students with no previous exposure to French.

**BG4** Tu and Th 01/20-02/19 6 - 8 p.m.  
Fee: \$175 Early Bird Registration Fee: \$157.50

→ Click here to register

**BG5** Tu and Th 03/03-04/02 6 - 8 p.m.  
Fee: \$175 Early Bird Registration Fee: \$157.50

→ Click here to register

**BG6** M, Tu and Th 04/14-05/14 6 - 8 p.m.  
Fee: \$175 Early Bird Registration Fee: \$157.50

→ Click here to register

## LIVE/ONLINE COURSES JAPANESE

### Japanese for Beginners: B1

Gain a level of understanding of basic Japanese (60 Kanji, 400 vocabulary words = 118 classroom hours). LIMITED SPACES AVAILABLE.

Tu and Thu 01/22-04/23 7-8 p.m.  
Fee: \$169 Early Bird Registration Fee: \$161.10

→ Click here to register

### Japanese for Low-Intermediate: IM1

Gain a level of understanding of basic Japanese (145 Kanji, 1,500 vocabulary words = 140 classroom hours). LIMITED SPACES AVAILABLE.

M and W 01/21-04/22 7-8 p.m.  
Fee: \$169 Early Bird Registration Fee: \$161.10

→ Click here to register

### Japanese for High-Intermediate: IMH1

Gain a level of understanding of basic Japanese (240 Kanji, 1,500 vocabulary words = 140 classroom hours). LIMITED SPACES AVAILABLE.

M and W 01/21-04/22 8-9 p.m.  
Fee: \$169 Early Bird Registration Fee: \$161.10

→ Click here to register

Click here to  
get back to the  
introductory page.



# EXTENDED LANGUAGE PROGRAMS

## FALL, SPRING AND SUMMER

### SEASONAL EXTENDED LANGUAGE PROGRAMS - WEEKDAYS

	SEASON	DURATION	MONTHS	LANGUAGES OFFERED:
FALL	Season 1	5 Weeks	August - September	<b>FACE-TO-FACE</b> English French Intensive Spanish Portuguese American Sign Language
	Season 2	5 Weeks	October-November	
	Season 3	5 Weeks	November-December	
SPRING	Season 4	5 Weeks	January-February	<b>LIVE/ONLINE</b> English French Italian Japanese Korean
	Season 5	5 Weeks	March-April	
	Season 6	5 Weeks	April-May	
SUMMER	Season 7	5 Weeks	June-July	
	Season 8	5 Weeks	July-August	

### SEASONAL EXTENDED LANGUAGE PROGRAM - WEEKENDS

	SEASON	MONTHS	LANGUAGES OFFERED:
FALL	Season 1	September-November	<b>FACE-TO-FACE</b> English French American Sign Language
SPRING	Season 2	January-March	
	Season 3	April-May	
SUMMER	Season 4	June-August	<b>LIVE/ONLINE</b> English

### SEASONAL PROGRAM - SUNDAYS

	SEASON	MONTHS
FALL	Season 1	August-December
SPRING	Season 2	January-May

**LANGUAGE OFFERED:**  
**FACE-TO-FACE:** Mandarin Chinese

### SPECIAL YOUTH CAMPS - SPRING

	DURATION	AGES
Seasonal	January-April	5 to 15 years old

**LANGUAGES OFFERED:**  
**FACE-TO-FACE:** Fundamental Mandarin Chinese





# FACE-TO-FACE COURSES

**!** All the following courses are offered for ages 18 and older unless otherwise specified.

## YOUTH CHINESE

### Fundamental Mandarin Chinese I (Ages 5 to 15)

Progress with learning Mandarin; learn additional vocabulary and how to read and write some basic traditional Chinese characters.

**Prerequisite:** Introductory Chinese or equivalent level of Chinese language proficiency approved by the teacher/principal.

**Sundays** 01/25-04/19 9 a.m.-Noon

**Fee: \$189** Early Bird Registration Fee: \$169

→ [Click here to register](#)

## CHINESE

### Introductory Mandarin Chinese

Learn to speak elementary Chinese, including pronunciation and common greetings; also learn how to read and write a few basic Chinese characters.

**Sundays** 01/25-04/19 9 a.m.-Noon

**Fee: \$189** Early Bird Registration Fee: \$169

→ [Click here to register](#)

### Fundamental Mandarin Chinese I (Ages 16 and Up)

Progress with learning Mandarin; learn additional vocabulary and how to read and write some basic traditional Chinese characters.

**Prerequisite:** Introductory Chinese I or equivalent level of Chinese language proficiency approved by the teacher/principal.

**Sundays** 01/25-04/19 9 a.m.-Noon

**Fee: \$189** Early Bird Registration Fee: \$169

→ [Click here to register](#)

### Fundamental Mandarin Chinese II (Ages 16 and Up)

Progress in your learning of Chinese (Mandarin). **Prerequisite:** Fundamental Chinese I or equivalent level of Chinese language proficiency approved by the teacher/principal.

**Sundays** 01/25-04/19 9 a.m.-Noon

**Fee: \$189** Early Bird Registration Fee: \$169

→ [Click here to register](#)

### Intermediate Mandarin Chinese

Get comfortable speaking, reading and writing Chinese; you will learn more vocabulary and read and write more as well.

**Prerequisite:** Fundamental Chinese II or equivalent level of Chinese language proficiency approved by the teacher/principal.

**Sundays** 01/25-04/19 9 a.m.-Noon

**Fee: \$189** Early Bird Registration Fee: \$169

→ [Click here to register](#)

### Advanced Mandarin Chinese

Learn more advanced vocabulary; the emphasis will be on reading and writing Chinese. **Prerequisite:** Intermediate Chinese (vocabulary of around 1,000 words) or equivalent level of Chinese language proficiency approved by the teacher/principal.

**Sundays** 01/25-04/19 9 a.m.-Noon

**Fee: \$189** Early Bird Registration Fee: \$169

→ [Click here to register](#)

**Click here to**  
get back to the  
introductory page.



All the following courses are offered for ages 18 and older unless otherwise specified.

## FRENCH

### Intensive French Program for Beginners

Designed for students with no previous exposure to French. Develop basic listening, speaking, reading and writing skills at the novice-high level. This is an introductory course for students with no previous exposure to French.

#### BG4

Tu and Th 01/20-02/19 6 - 8 p.m.  
Fee: \$175 Early Bird Registration Fee: \$157.50

→ Click here to register

#### BG5

Tu and Th 03/03-04/02 6 - 8 p.m.  
Fee: \$175 Early Bird Registration Fee: \$157.50

→ Click here to register

#### BG6

M, Tu and Th 04/14-05/14 6 - 8 p.m.  
Fee: \$175 Early Bird Registration Fee: \$157.50

→ Click here to register

### Intensive French Program for Intermediate

Refine French speaking, listening, reading and writing skills.

#### IM4

M and W 01/21-02/18 6 - 7:30 p.m.  
Fee: \$175 Early Bird Registration Fee: \$157.50

→ Click here to register

#### IM5

M and W 03/02-04/01 6 - 7:30 p.m.  
Fee: \$175 Early Bird Registration Fee: \$157.50

→ Click here to register

#### IM6

M and W 04/13-05/13 6 - 7:30 p.m.  
Fee: \$175 Early Bird Registration Fee: \$157.50

→ Click here to register

## PORTUGUESE

### Portuguese for Beginners

Develop fluency through conversation practice under the guidance of a native speaker.

#### BG2

Saturdays 01/17-03/21 9 - 11 a.m.  
Fee: \$165 Early Bird Registration Fee: \$157.50

→ Click here to register

#### BG3

Saturdays 04/11-05/30 9 - 11 a.m.  
Fee: \$135 Early Bird Registration Fee: \$121.50

→ Click here to register

## SIGN LANGUAGE

### American Sign Language

Learn the basic elements of sign language, and practice essential vocabulary and phrases in order to communicate properly using basic signs.

#### BG2

Saturdays 01/17-03/21 9 - 11 a.m.  
Fee: \$120 Early Bird Registration Fee: \$108

→ Click here to register

#### BG3

Saturdays 04/11-05/30 9 - 11 a.m.  
Fee: \$120 Early Bird Registration Fee: \$108

→ Click here to register

### American Sign Language

Learn the alphabet, and practice essential vocabulary and phrases to communicate properly with basic signs.

#### IM4

M and W 01/21-02/18 6 - 8 p.m.  
Fee: \$130 Early Bird Registration Fee: \$117

→ Click here to register

#### IM5

M and W 03/02-04/01 6 - 8 p.m.  
Fee: \$130 Early Bird Registration Fee: \$117

→ Click here to register

#### IM6

M and W 04/13-05/13 6 - 8 p.m.  
Fee: \$130 Early Bird Registration Fee: \$117

→ Click here to register





All the following courses are offered for ages 18 and older unless otherwise specified.

## SPANISH

### Intensive Spanish Program: Intro to Basics

Learn Spanish as a tool to receive and transmit information, emotions, experiences and opinions.

#### IBS4

Tu and Th 01/20-02/19 6 - 8 p.m.  
Fee: \$175 Early Bird Registration Fee: \$157.50

→ [Click here to register](#)

#### IBS5

Tu and Th 03/03-04/02 6 - 8 p.m.  
Fee: \$175 Early Bird Registration Fee: \$157.50

→ [Click here to register](#)

#### IBS6

M, Tu and Th 04/14-05/14 6 - 8 p.m.  
Fee: \$175 Early Bird Registration Fee: \$157.50

→ [Click here to register](#)

### Intensive Spanish Program for Beginner to Intermediate

Learn basic, communicative Spanish grammar and vocabulary, as well as linguistic and cultural strategies to improve communication.

#### BIM4

M and W 01/21-02/18 6 - 8 p.m.  
Fee: \$175 Early Bird Registration Fee: \$157.50

→ [Click here to register](#)

#### BIM5

M and W 03/02-04/01 6 - 8 p.m.  
Fee: \$175 Early Bird Registration Fee: \$157.50

→ [Click here to register](#)

#### BIM6

M and W 04/13-05/13 6 - 8 p.m.  
Fee: \$175 Early Bird Registration Fee: \$157.50

→ [Click here to register](#)



### Intensive Spanish Program for Intermediate to Advanced

Increase your fluency and comprehension by integrating the use of complex language structures and improving your ability to express more abstract concepts.

#### INAD2

Saturdays 01/17-03/21 9-11 a.m.  
Fee: \$175 Early Bird Registration Fee: \$157.50

→ [Click here to register](#)

#### INAD3

Saturdays 04/11-05/30 9-11 a.m.  
Fee: \$175 Early Bird Registration Fee: \$157.50

→ [Click here to register](#)



**EARLY BIRD**  
discount

Register by December 15 and receive  
**10% OFF eligible courses.\***

Don't miss your chance to save with this  
limited-time offer each semester!

\*Discounts do not apply to certain programs, including but not limited to: English Language Institute Core Program, aquatics courses and online courses offered in partnership with third parties. Discounts outlined here may not be combined with any other discounts.





! All the following courses are offered live/online for ages 18 and older.

# LIVE/ONLINE COURSES

## JAPANESE

### Japanese for Beginners: B1

Gain a level of understanding of basic Japanese (60 Kanji, 400 vocabulary words = 118 classroom hours). LIMITED SPACES AVAILABLE.

**Tu and Thu** 01/22-04/23 7-8 p.m.  
**Fee: \$169** Early Bird Registration Fee: \$161.10

→ Click here to register

### Japanese for Low-Intermediate: IM1

Gain a level of understanding of basic Japanese (145 Kanji, 1,500 vocabulary words = 140 classroom hours). LIMITED SPACES AVAILABLE.

**M and W** 01/21-04/22 7-8 p.m.  
**Fee: \$169** Early Bird Registration Fee: \$161.10

→ Click here to register

### Japanese for High-Intermediate: IMH1

Gain a level of understanding of basic Japanese (240 Kanji, 1,500 vocabulary words = 140 classroom hours).

**Recommended:** Completion of all 4 levels of Japanese for Low-Intermediate and knowledge of hiragana, katakana and 145 kanji. LIMITED SPACES AVAILABLE.

**M and W** 01/21-04/22 8-9 p.m.  
**Fee: \$169** Early Bird Registration Fee: \$161.10

→ Click here to register

## KOREAN

### Korean for Beginners

Develop a basic level of communication, vocabulary and grammar.

#### BG4

**Tu and Th** 01/20-02/19 6 - 8 p.m.  
**Fee: \$155** Early Bird Registration Fee: \$139.20

→ Click here to register

#### BG5

**Tu and Th** 03/03-04/02 6 - 8 p.m.  
**Fee: \$155** Early Bird Registration Fee: \$139.20

→ Click here to register

#### BG6

**M, Tu and Th** 04/14-05/14 6 - 8 p.m.  
**Fee: \$155** Early Bird Registration Fee: \$139.20

→ Click here to register

Click here to get back to the introductory page.





# ONLINE COURSES

**!** All the following courses are offered fully online for ages 18 and older.

## FRENCH

### Beginning Conversational French

Learn correct French pronunciation using a logical, systematic method.

**INSTRUCTOR-LED\***

**Start Date: January 14, 2026**

→ [Click here to register](#)

**INSTRUCTOR-LED\***

**Start Date: February 18, 2026**

→ [Click here to register](#)

**INSTRUCTOR-LED\***

**Start Date: March 18, 2026**

→ [Click here to register](#)

**INSTRUCTOR-LED\***

**Start Date: April 15, 2026**

→ [Click here to register](#)

**SELF-PACED\***

**Start Date: Anytime**

→ [Click here to register](#)

## ITALIAN

### Instant Italian

Express yourself comfortably and communicate effectively in Italian in a wide variety of settings.

**INSTRUCTOR-LED\***

**Start Date: January 14, 2026**

→ [Click here to register](#)

**INSTRUCTOR-LED\***

**Start Date: February 18, 2026**

→ [Click here to register](#)

**INSTRUCTOR-LED\***

**Start Date: March 18, 2026**

→ [Click here to register](#)

**INSTRUCTOR-LED\***

**Start Date: April 15, 2026**

→ [Click here to register](#)

**SELF-PACED\***

**Start Date: Anytime**

→ [Click here to register](#)

## JAPANESE

### Conversational Japanese

Learn useful words and phrases for conversing as you master the essentials of the Japanese language.

**INSTRUCTOR-LED\***

**Start Date: January 14, 2026**

→ [Click here to register](#)

**INSTRUCTOR-LED\***

**Start Date: February 18, 2026**

→ [Click here to register](#)

**INSTRUCTOR-LED\***

**Start Date: March 18, 2026**

→ [Click here to register](#)

**INSTRUCTOR-LED\***

**Start Date: April 15, 2026**

→ [Click here to register](#)

**SELF-PACED\***

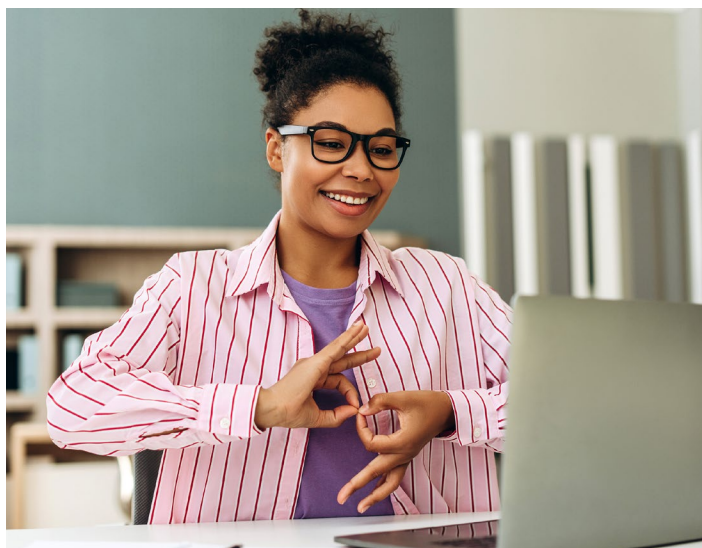
**Start Date: Anytime**

→ [Click here to register](#)

**Pricing for the courses on this page is available on the course website;** simply follow the "Click here to register" link under each course description to get more information.

**Note:** \*Additional course dates may be available, please check the links for details.

*All the following courses are offered for ages 18 and older unless otherwise specified.*



## SIGN LANGUAGE

### Discover Sign Language

Learn how to sign basic phrases and complete sentences and how to put it all together, so you can introduce yourself and start a conversation.

**INSTRUCTOR-LED\***

**Start Date: January 14, 2026**

→ [Click here to register](#)

**INSTRUCTOR-LED\***

**Start Date: February 18, 2026**

→ [Click here to register](#)

**INSTRUCTOR-LED\***

**Start Date: March 18, 2026**

→ [Click here to register](#)

**INSTRUCTOR-LED\***

**Start Date: April 15, 2026**

→ [Click here to register](#)

**SELF-PACED\***

**Start Date: Anytime**

→ [Click here to register](#)

### Discover Sign Language II

Build on your knowledge of Sign Language; learn to construct phrases and sentences and add to your vocabulary.

**INSTRUCTOR-LED\***

**Start Date: January 14, 2026**

→ [Click here to register](#)

**INSTRUCTOR-LED\***

**Start Date: February 18, 2026**

→ [Click here to register](#)

**INSTRUCTOR-LED\***

**Start Date: March 18, 2026**

→ [Click here to register](#)

**INSTRUCTOR-LED\***

**Start Date: April 15, 2026**

→ [Click here to register](#)

**SELF-PACED\***

**Start Date: Anytime**

→ [Click here to register](#)

### Discover Sign Language Series

A combination of Discover Sign Language Levels I and II. Learn how to sign basic phrases and complete sentences and how to put it all together, so you can introduce yourself and start a conversation. Also learn new vocabulary plus how to build phrases and sentences with vocabulary previously learned.

**INSTRUCTOR-LED\***

**Start Date: January 14, 2026**

→ [Click here to register](#)

**INSTRUCTOR-LED\***

**Start Date: February 18, 2026**

→ [Click here to register](#)

**INSTRUCTOR-LED\***

**Start Date: March 18, 2026**

→ [Click here to register](#)

**INSTRUCTOR-LED\***

**Start Date: April 15, 2026**

→ [Click here to register](#)

**SELF-PACED\***

**Start Date: Anytime**

→ [Click here to register](#)



We would like to hear from you and see how our fall online language courses are working for you. **Post a comment.**





*All the following courses are offered for ages 18 and older unless otherwise specified.*

## SPANISH

### Spanish for Law Enforcement

Master basic Spanish to be more effective in handling law enforcement situations involving Spanish-speaking victims, witnesses or criminals.

**INSTRUCTOR-LED\***

**Start Date: January 14, 2026**

→ Click here to register

**INSTRUCTOR-LED\***

**Start Date: February 18, 2026**

→ Click here to register

**INSTRUCTOR-LED\***

**Start Date: March 18, 2026**

→ Click here to register

**INSTRUCTOR-LED\***

**Start Date: April 15, 2026**

→ Click here to register

**SELF-PACED\***

**Start Date: Anytime**

→ Click here to register

### Spanish for Medical Professionals

Get the basic tools you need to bridge the communication gap with Spanish-speaking patients.

**INSTRUCTOR-LED\***

**Start Date: January 14, 2026**

→ Click here to register

**INSTRUCTOR-LED\***

**Start Date: February 18, 2026**

→ Click here to register

**INSTRUCTOR-LED\***

**Start Date: March 18, 2026**

→ Click here to register

**INSTRUCTOR-LED\***

**Start Date: April 15, 2026**

→ Click here to register

**SELF-PACED\***

**Start Date: Anytime**

→ Click here to register

### Spanish in the Classroom

Learn essential Spanish for teachers and bridge the communication gap with your Spanish-speaking students and parents.

**INSTRUCTOR-LED\***

**Start Date: January 14, 2026**

→ Click here to register

**INSTRUCTOR-LED\***

**Start Date: February 18, 2026**

→ Click here to register

**INSTRUCTOR-LED\***

**Start Date: March 18, 2026**

→ Click here to register

**INSTRUCTOR-LED\***

**Start Date: April 15, 2026**

→ Click here to register

**SELF-PACED\***

**Start Date: Anytime**

→ Click here to register

### Speed Spanish

Learn Spanish quickly with the help of six easy recipes for gluing Spanish words together to form sentences; designed for anyone who wants to learn Spanish quickly.

**INSTRUCTOR-LED\***

**Start Date: January 14, 2026**

→ Click here to register

**INSTRUCTOR-LED\***

**Start Date: February 18, 2026**

→ Click here to register

**INSTRUCTOR-LED\***

**Start Date: March 18, 2026**

→ Click here to register

**INSTRUCTOR-LED\***

**Start Date: April 15, 2026**

→ Click here to register

**SELF-PACED\***

**Start Date: Anytime**

→ Click here to register

### Speed Spanish II

Become more conversational and comfortable in Spanish-speaking situations. Improve your Spanish fluency, vocabulary and pronunciation.

**INSTRUCTOR-LED\***

**Start Date: January 14, 2026**

→ Click here to register

**INSTRUCTOR-LED\***

**Start Date: February 18, 2026**

→ Click here to register

**INSTRUCTOR-LED\***

**Start Date: March 18, 2026**

→ Click here to register

**INSTRUCTOR-LED\***

**Start Date: April 15, 2026**

→ Click here to register

**SELF-PACED\***

**Start Date: Anytime**

→ Click here to register

"Taking Spanish classes with Mr. Ramos has given me confidence in myself when speaking with native speakers."

**-Languages student,  
Fall 2025**

**Pricing for the courses on this page is available on the course website;** simply follow the "Click here to register" link under each course description to get more information.

**Note:** \*Additional course dates may be available, please check the links for details.

*All the following courses are offered for ages 18 and older unless otherwise specified.*

## SPANISH (CONT.)

### Speed Spanish III

The final installment of a three-part Speed Spanish Learning Series; learn the final six recipes that will serve as templates to help you create any Spanish sentence you want.

#### INSTRUCTOR-LED\*

**Start Date: January 14, 2026**

→ [Click here to register](#)

#### INSTRUCTOR-LED\*

**Start Date: February 18, 2026**

→ [Click here to register](#)

#### INSTRUCTOR-LED\*

**Start Date: March 18, 2026**

→ [Click here to register](#)

#### INSTRUCTOR-LED\*

**Start Date: April 15, 2026**

→ [Click here to register](#)

#### SELF-PACED\*

**Start Date: Anytime**

→ [Click here to register](#)

### Speed Spanish Series

Learn Spanish quickly with the help of six easy recipes for gluing Spanish words together to form sentences with this three-part series.

#### INSTRUCTOR-LED\*

**Start Date: January 14, 2026**

→ [Click here to register](#)

#### INSTRUCTOR-LED\*

**Start Date: February 18, 2026**

→ [Click here to register](#)

#### INSTRUCTOR-LED\*

**Start Date: March 18, 2026**

→ [Click here to register](#)

#### INSTRUCTOR-LED\*

**Start Date: April 15, 2026**

→ [Click here to register](#)

#### SELF-PACED\*

**Start Date: Anytime**

→ [Click here to register](#)



## ENGLISH WRITING AND PUBLISHING

### Grammar Refresher

Develop English grammar skills and take your writing and speaking to the next level.

#### INSTRUCTOR-LED\*

**Start Date: January 14, 2026**

→ [Click here to register](#)

#### INSTRUCTOR-LED\*

**Start Date: February 18, 2026**

→ [Click here to register](#)

#### INSTRUCTOR-LED\*

**Start Date: March 18, 2026**

→ [Click here to register](#)

#### INSTRUCTOR-LED\*

**Start Date: April 15, 2026**

→ [Click here to register](#)

#### SELF-PACED\*

**Start Date: Anytime**

→ [Click here to register](#)

**Click here to**  
get back to the  
introductory page.



# WE ARE HIRING LANGUAGES INSTRUCTORS



UTEP  
PROFESSIONAL AND  
PUBLIC PROGRAMS  
EXTENDED UNIVERSITY

If you're interested in teaching an existing course or have an idea for a new course, **we'd love to hear from you!**

**Certified instructors are needed in the following areas:**

- American Sign Language
- English as a Second Language
- French
- Italian
- Japanese
- Korean
- Portuguese
- Spanish

To learn more about becoming a **Professional and Public Programs instructor\*** call us at 915-747-5142 or email [ppp@utep.edu](mailto:ppp@utep.edu)

*\*Must create own curriculum and course syllabus.*





# LANGUAGES AND CULTURAL STUDIES COURSE INDEX

Interested in a course? Click on the course title to learn more and register!

## FACE-TO-FACE COURSES

### YOUTH CHINESE

**Fundamental Mandarin Chinese I**  
(Ages 5 to 15)

### CHINESE

**Introductory Mandarin Chinese**

**Fundamental Mandarin Chinese I**  
(Ages 16 and Up)

**Fundamental Mandarin Chinese II**  
(Ages 16 and Up)

**Intermediate Mandarin Chinese**

**Advanced Mandarin Chinese**

### FRENCH

**Intensive French Program for  
Beginners**

BG4

BG5

BG6

**Intensive French Program for  
Intermediate**

IM4

IM5

IM6

### PORTUGUESE

**Portuguese for Beginners**

BG2

BG3

### SIGN LANGUAGE

**American Sign Language**

BG2

BG3

**American Sign Language**

IM4

IM5

IM6

### SPANISH

**Intensive Spanish Program: Intro  
to Basics**

IBS4

IBS5

IBS6

**Intensive Spanish Program for  
Beginners to Intermediate**

BIM4

BIM5

BIM6

**Intensive Spanish Program for  
Intermediate to Advanced**

INAD2

INAD3

## LIVE/ONLINE COURSES

### JAPANESE

**Japanese for Beginners: B1**

**Japanese for Low-Intermediate:**  
IM1

**Japanese for High-Intermediate:**  
IMH1

### KOREAN

**Korean for Beginners**

BG4

BG5

BG6

## ONLINE COURSES

### FRENCH

**Beginning Conversational French**  
**INSTRUCTOR-LED\***

Start Date: January 14, 2026

Start Date: February 18, 2026

Start Date: March 18, 2026

Start Date: April 15, 2026

**SELF-PACED\***

Start Date: Anytime

### ITALIAN

**Instant Italian**  
**INSTRUCTOR-LED\***

Start Date: January 14, 2026

Start Date: February 18, 2026

Start Date: March 18, 2026

Start Date: April 15, 2026

**SELF-PACED\***

Start Date: Anytime

### JAPANESE

**Conversational Japanese**  
**INSTRUCTOR-LED\***

Start Date: January 14, 2026

Start Date: February 18, 2026

Start Date: March 18, 2026

Start Date: April 15, 2026

**SELF-PACED\***

Start Date: Anytime

Click here to  
get back to the  
introductory page.



All the following courses are offered for ages 18 and older unless otherwise specified.

**Interested in a course?** Click on the course title to learn more and register!

## ONLINE COURSES

### SIGN LANGUAGE

#### Discover Sign Language

##### INSTRUCTOR-LED\*

Start Date: January 14, 2026  
Start Date: February 18, 2026  
Start Date: March 18, 2026  
Start Date: April 15, 2026

##### SELF-PACED\*

Start Date: Anytime

#### Discover Sign Language II

##### INSTRUCTOR-LED\*

Start Date: January 14, 2026  
Start Date: February 18, 2026  
Start Date: March 18, 2026  
Start Date: April 15, 2026

##### SELF-PACED\*

Start Date: Anytime

#### Discover Sign Language Series

##### INSTRUCTOR-LED\*

Start Date: January 14, 2026  
Start Date: February 18, 2026  
Start Date: March 18, 2026  
Start Date: April 15, 2026

##### SELF-PACED\*

Start Date: Anytime

### SPANISH

#### Spanish for Law Enforcement

##### INSTRUCTOR-LED\*

Start Date: January 14, 2026  
Start Date: February 18, 2026  
Start Date: March 18, 2026  
Start Date: April 15, 2026

##### SELF-PACED\*

Start Date: Anytime

#### Spanish for Medical Professionals

##### INSTRUCTOR-LED\*

Start Date: January 14, 2026  
Start Date: February 18, 2026  
Start Date: March 18, 2026  
Start Date: April 15, 2026

##### SELF-PACED\*

Start Date: Anytime

#### Spanish in the Classroom

##### INSTRUCTOR-LED\*

Start Date: January 14, 2026  
Start Date: February 18, 2026  
Start Date: March 18, 2026  
Start Date: April 15, 2026

##### SELF-PACED\*

Start Date: Anytime

#### Speed Spanish

##### INSTRUCTOR-LED\*

Start Date: January 14, 2026  
Start Date: February 18, 2026  
Start Date: March 18, 2026  
Start Date: April 15, 2026

##### SELF-PACED\*

Start Date: Anytime

#### Speed Spanish II

##### INSTRUCTOR-LED\*

Start Date: January 14, 2026  
Start Date: February 18, 2026  
Start Date: March 18, 2026  
Start Date: April 15, 2026

##### SELF-PACED\*

Start Date: Anytime

#### Speed Spanish III

##### INSTRUCTOR-LED\*

Start Date: January 14, 2026  
Start Date: February 18, 2026  
Start Date: March 18, 2026  
Start Date: April 15, 2026

##### SELF-PACED\*

Start Date: Anytime

#### Speed Spanish Series

##### INSTRUCTOR-LED\*

Start Date: January 14, 2026  
Start Date: February 18, 2026  
Start Date: March 18, 2026  
Start Date: April 15, 2026

##### SELF-PACED\*

Start Date: Anytime

### ENGLISH WRITING AND PUBLISHING

#### Grammar Refresher

##### INSTRUCTOR-LED\*

Start Date: January 14, 2026  
Start Date: February 18, 2026  
Start Date: March 18, 2026  
Start Date: April 15, 2026

##### SELF-PACED\*

Start Date: Anytime



Register by December 15  
and receive  
**10% OFF**  
eligible courses.\*

\*Exclusions apply.  
Go to page 2 for more details.\*



THE UNIVERSITY OF TEXAS AT EL PASO

**100% online degrees  
from UTEP**

**EDUCATION THAT FITS**

**YOUR LIFESTYLE.**

All the online programs offered are of the same great quality and academic rigor as face-to-face degree programs and are taught by the same faculty who teach on-campus courses.

Pick the program you're interested in and [fill out a form](#) or call us. We promise you won't be disappointed!

**APPLY NOW!**

Have questions? Contact us today.

[utepconnect.utep.edu](http://utepconnect.utep.edu)

1-800-684-UTEP

Scan QR code for more information.



**UTEP ONLINE**





# LANGUAGES AND CULTURAL STUDIES

meet THE team



**MARIA PLACENCIA**  
PROGRAM MANAGER

Maria Placencia is a native of Southwest Texas and longtime resident of El Paso. She is the daughter of immigrant parents and a first-generation college graduate from The University of Texas at El Paso, graduating with a bachelor's degree in Multidisciplinary Studies with honors. Currently, Maria is the Program Manager for the English Language Institute (ELI) and the Languages and Cultural Studies Program. She has over 21 years of experience working with academic and research departments at The University of Texas at El Paso. For Maria, the best part of working at UTEP is getting to work with students to help them reach their potential. Maria is an active member in the community and does volunteer work as a charter member of the El Paso Executive Women Lions Club. She is also active on campus as a member of the UTEP Staff Council.

**Favorite inspirational quote:** "All your dreams can come true if you have the courage to pursue them."  
- Walt Disney

# Spring 2026

course guide



## CONTACT US



**ONLINE**

Visit us at [ppp.utep.edu](http://ppp.utep.edu)



**BY EMAIL**

Email us at [p3lang@utep.edu](mailto:p3lang@utep.edu)



**BY PHONE**

Call 915-747-5142,  
Monday-Friday, 8 a.m.-5 p.m.

Connect with us to receive special offers, updates on courses and more!



**UTEP.P3**



**UTEP\_P3**



**UTEP.P3**



**UTEP-P3**



**UTEP**  
**PROFESSIONAL AND**  
**PUBLIC PROGRAMS**  
**EXTENDED UNIVERSITY**

Graphic design by Claudia Cornejo and Kimberly Guerrero

Writing/editing by Arathi Kylasam

All photos used in this publication are courtesy of UTEP's Division of Marketing and Communications and Extended University's Marketing Department

Photo and vector stock courtesy of ed2go.com, freepik.com, jeshoots.com, pexels.com, pixabay.com, rawpixel.com, stock.adobe.com, unsplash.com and vecteezy.com