

Online Master of Multidisciplinary Studies

Program Highlights

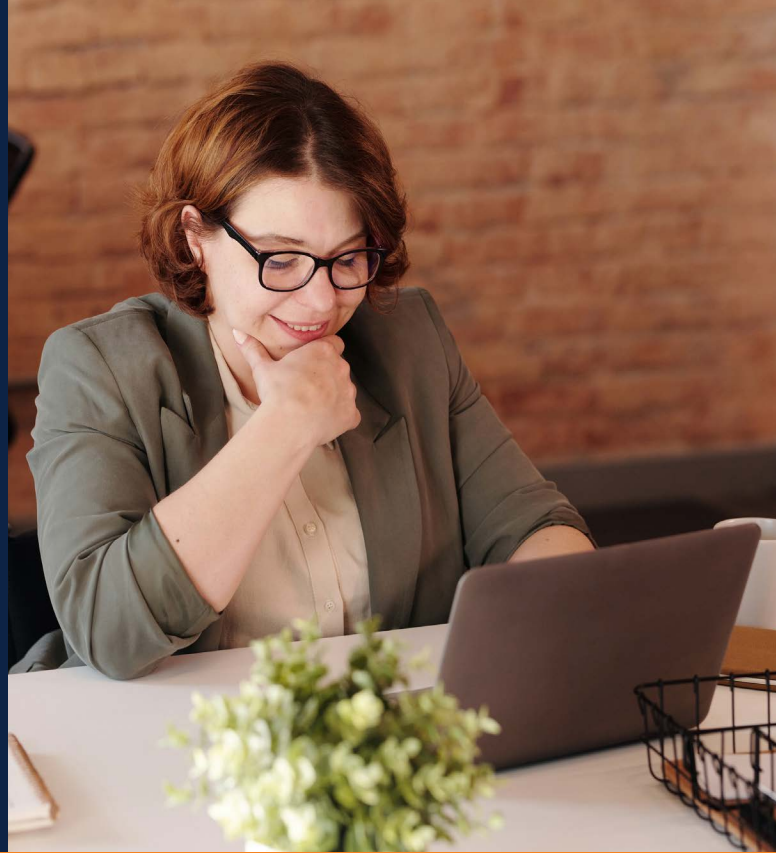
30 credit hours

In-state tuition: \$480.90/credit hour*

Out-of-state tuition: \$590.53/credit hour*

* Tuition is based on 2023-2024 rates and is subject to change.

- Flexible and customizable degree designed to meet student needs
- Stackable certificates combined with complementary coursework to provide specific skills



Design your own degree plan for maximum flexibility

The Master of Multidisciplinary Studies (MMDS) is a 30-semester credit hour degree that can be customized to meet individual students' needs. The degree integrates courses from at least two disciplines. The program's flexibility encourages students to create a degree plan that will provide them with the skill sets they seek.

Admission to the MMDS requires students to:

- Submit a graduate school application for the MMDS
- Additionally submit
 - a "certificate identification form" which is the application for the graduate certificate.
 - supplementary documents for the certificate, if applicable.

Students will then complete the rest of the 30 hours for the MMDS by taking complementary courses.

Note that

- Complementary courses must be approved by the MMDS program advisor and the department housing each course prior to enrollment.
- Students in the MMDS can take certificate and approved complementary courses simultaneously.
- It is possible for students to use completed courses from a second graduate certificate to fulfill all or parts of the complementary course work for the MMDS.



UTEP CONNECT
EXTENDED UNIVERSITY

Ready to connect or have questions?

Call **1-800-684-UTEP** to speak with an enrollment counselor today or visit us at utepconnect.utep.edu

Online Master of Multidisciplinary Studies

Admissions Requirements

You must complete and submit the following

- Online application for admission into the MMDS program through the Graduate School
- Proof that, at the time of application into the MMDS, you have also (a) applied to a graduate certificate program; (b) been accepted into a graduate certificate program; or (c) completed a graduate certificate program.

Curriculum

30 semester credit hours are required to complete this master's degree program. You will complete the two following types of coursework to acquire your degree. Note that both categories of courses may be taken simultaneously.

Graduate Certificate Courses

Complete a graduate certificate of between 12-18 semester credit hours; if the graduate certificate is less than 12 semester credit hours, you must complete additional coursework in the same discipline to make up a total of 12 semester credit hours. You may choose from face-to-face or online graduate certificates.

Complementary Coursework

Pick complementary coursework from another graduate certificate or master's program to earn a total of 30 semester credit hours and complete the degree.

- Subject matter in this coursework must be different from, but complementary to, that of the certificate discipline.
- Complementary courses must be approved by the MMDS program advisor and course department prior to enrollment.
- Complementary coursework may be completed face-to-face or fully online.

Total Credits: 30

Note: Curriculum is subject to change.



Phone: 1-800-684-UTEP
Email: utepconnect@utep.edu
Website: utepconnect.utep.edu

