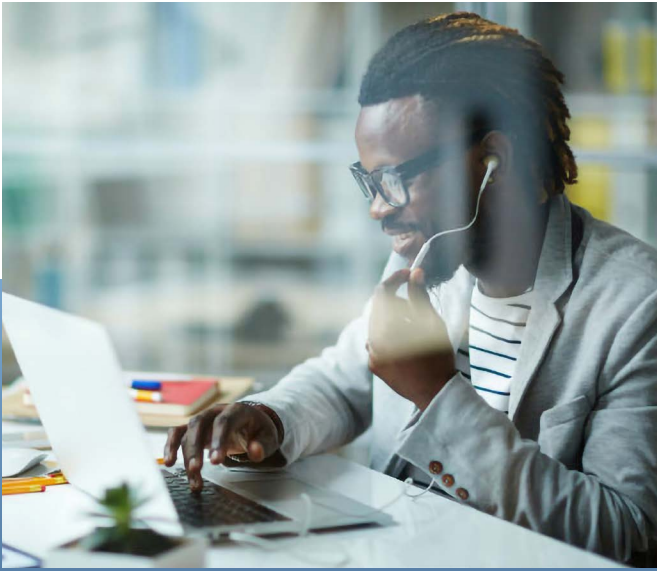




UTEP CONNECT
EXTENDED UNIVERSITY



ONLINE BACHELOR OF MULTIDISCIPLINARY STUDIES

PROGRAM HIGHLIGHTS

120 credit hours

In-state tuition: \$420/credit hour*

Out-of-state tuition: \$540/credit hour*

* Tuition is based on 2024-2025 rates and is subject to change.*

- Convenient 100% online degree
- Completion degree for students who have accumulated prior semester credits without completing a degree
- Individualized program designed for your unique interests and earned credit
- Online curriculum available from four Texas universities
- Perfect for students who want to explore various disciplines

IS THE BMS FOR ME?

The BMS is a great completion degree. It's perfect for you if you have over 60 credit hours from different subject areas (majors) or from different institutions.

You can explore up to three concentration areas (pick from Chicano studies, communication or criminal justice) in addition to your core studies and have access to a wide range of careers available after graduation depending on your interests and the path you choose.



READY TO CONNECT OR HAVE QUESTIONS?

Call **1-800-684-UTEP** to speak with an enrollment counselor today or visit us at **utepconnect.utep.edu**.

ADMISSIONS REQUIREMENTS

To qualify for enrollment into the online BMS program, all prospective students must submit a completed admission application and the following materials:

- Official high school transcript(s)
 - Your transcript(s) must be mailed to UTEP directly from the school(s) attended.
 - Please make sure that your school includes your diploma type, rank and GPA.
- Official test scores
SAT (Scholastic Assessment Test), ACT (American College Test), GED (Test of General Educational Development) and/or TAKS (Texas Assessment of Knowledge and Skills) scores must be mailed to UTEP's Office of Admissions and Recruitment directly from the testing agency or must appear in your official high school transcript.
- Transfer and/or military applicants:
 - Official college transcripts mailed to UTEP directly from all applicable institutions
 - Official military transcripts to receive credit for coursework completed while on active duty
- International applicants:
 - Official transcripts, provisional certificates
 - Official TOEFL scores (if required)

Note: All transcripts in languages other than English must be accompanied by a certified English translation by the educational institution, an American Consulate, or a certified English translator.

CURRICULUM

As a student in the online BMS program, you're required to successfully complete a total of 120 semester credit hours of coursework and work with a BMS counselor to choose three areas of concentration. In addition to completing organized courses, you will also be required to submit a final paper or project completed in an upper-level class to a BMS advisor during your final year of study

CORE COURSEWORK

General Education Courses	42 semester credit hours
Concentration I	15 semester credit hours
Concentration II	15 semester credit hours
Concentration III	15 semester credit hours
Electives	33 semester credit hours

Total Credits for Degree Completion 120 semester credit hours

Note: Curriculum is subject to change.



UTEP CONNECT

THE UNIVERSITY OF TEXAS AT EL PASO

PHONE: 1-800-684-UTEP

EMAIL: utepconnect@utep.edu

WEBSITE: utepconnect.utep.edu

GO MINERS!