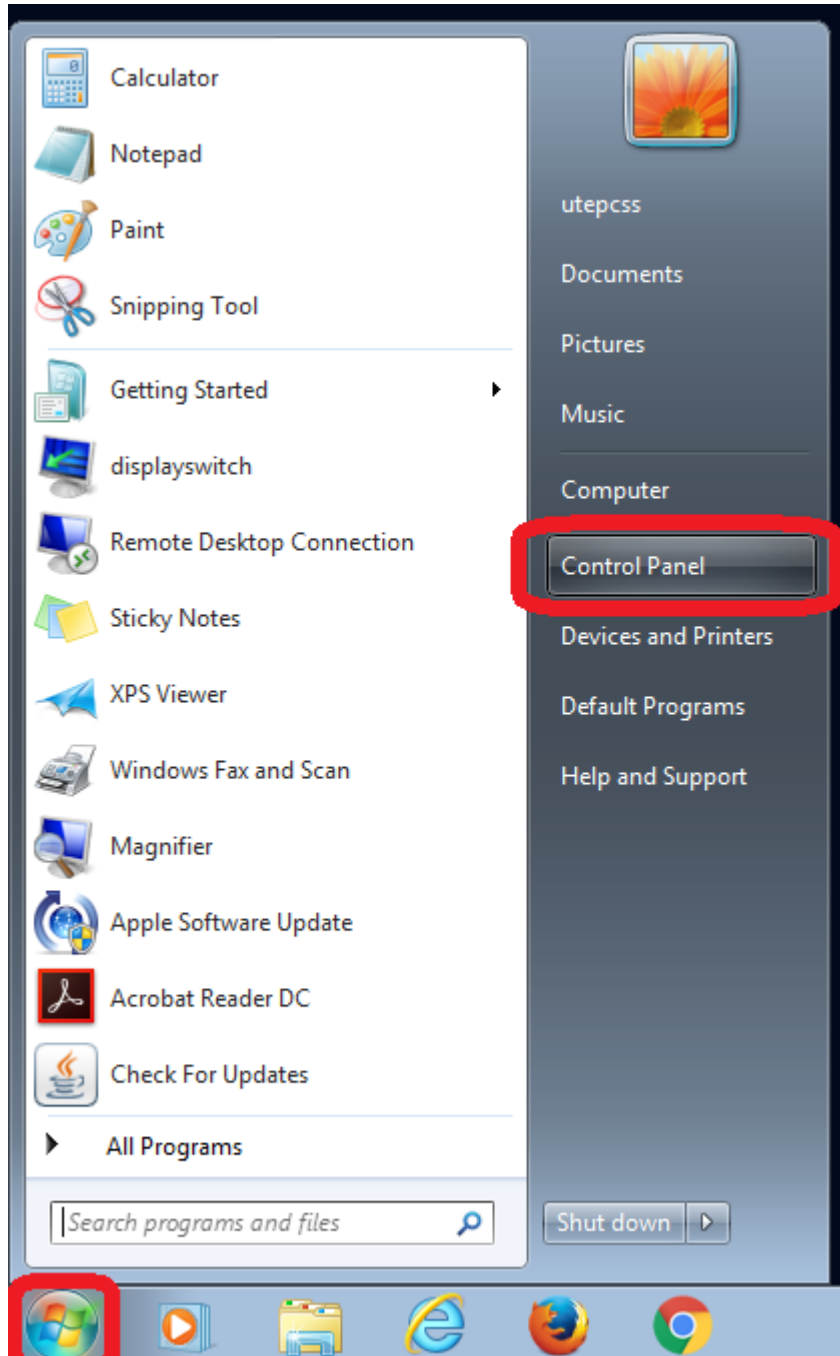


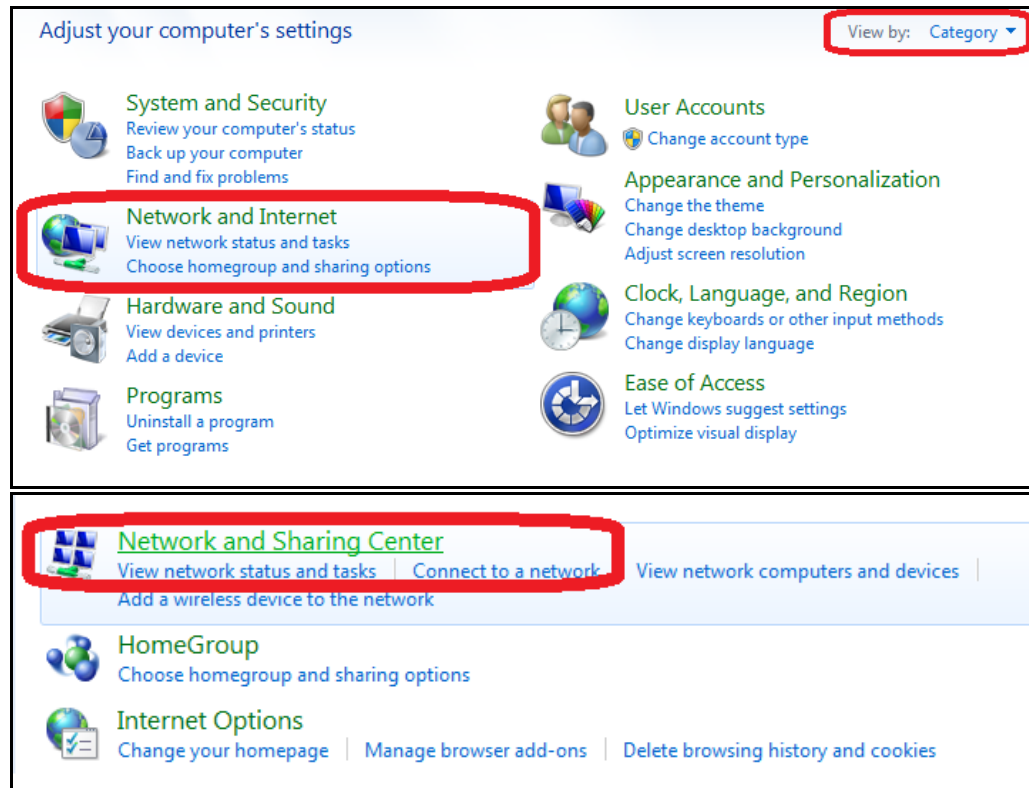
How to Forget a Wireless Connection in Windows 7

Here are the steps to forget the connection settings for a wireless connection in Windows 7.

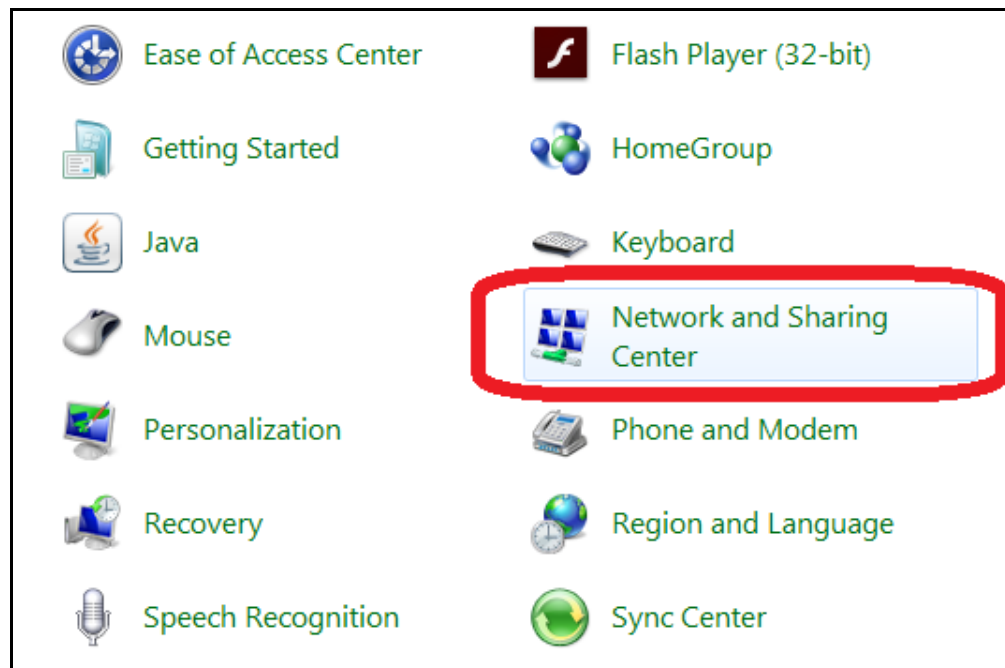
1. First, click on the **Start button** and choose **Control Panel** to open the Control Panel.



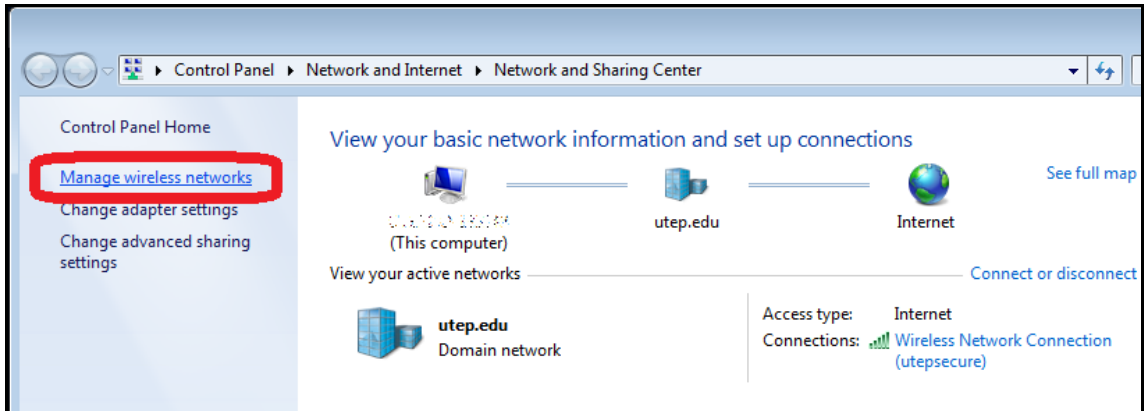
2. In the **Control Panel**, there are two view modes – **Icons** and **Category**.
- If you are in **Category view**, click the **Network and Internet** category and then click on **Network and Sharing Center**.



- If you are in **Icon view**, simply click on the **Network and Sharing Center** icon.



3. In the **Network and Sharing Center**, click **Manage wireless networks** in the menu on the left side of the window.



4. In the **Manage wireless networks** window, choose the network that you want to forget. For UTEP's wireless network, the network name should be **utepsecure**. Click on the network name to select it and then click on the **Remove** button to forget it. Click the **Yes** button when prompted to forget the network.

