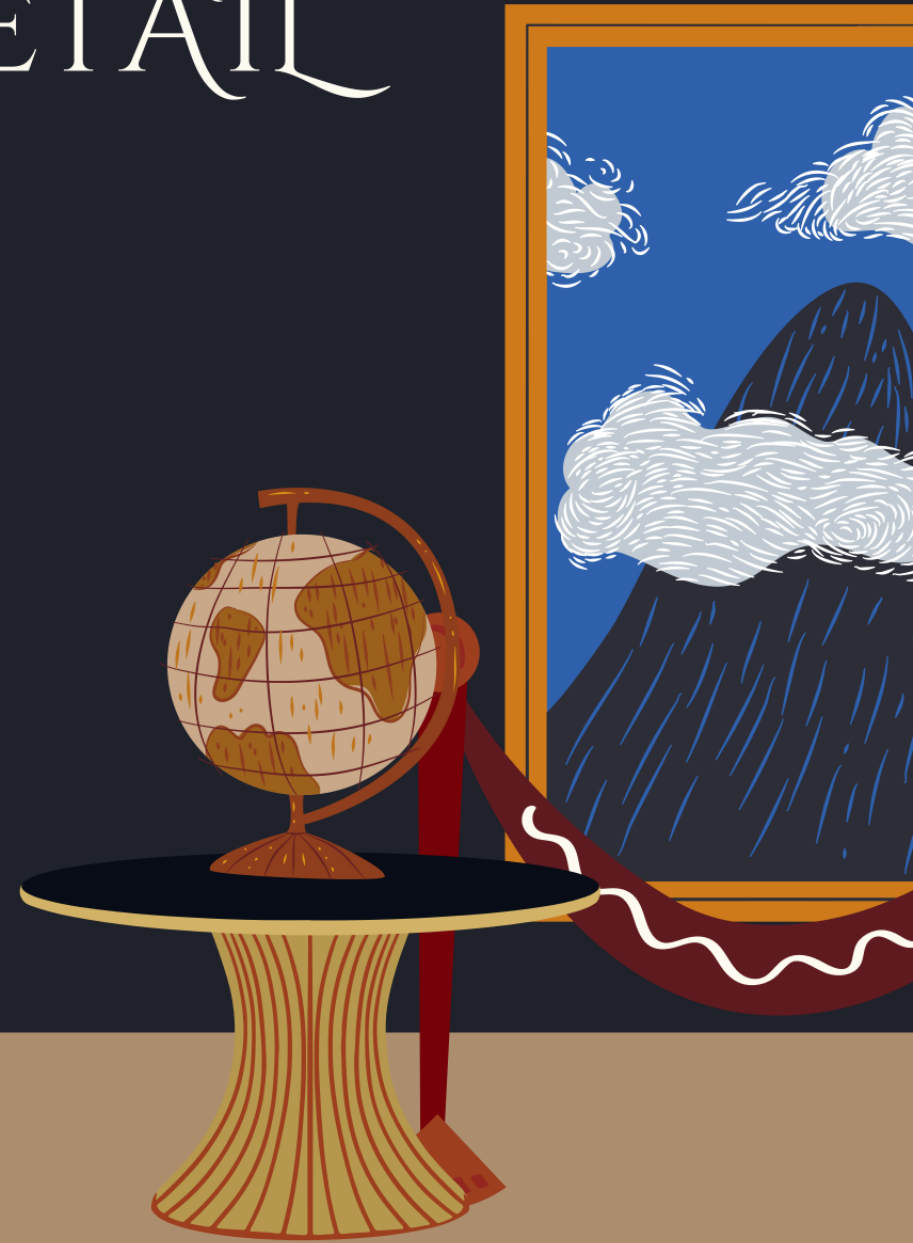


3. OUTLINE WITH DETAIL

- Do this for your INTRODUCTION and CONCLUSION.
 - How you will begin
 - How you will summarize and conclude.



4. WRITE WITH PURPOSE

- Now that you have an outline
--> It's time to flesh out your thesis statement
- Don't be too broad with your thesis :
 - Remember to pick an arguable
 - Something specific
 - Something you can justify with supporting evidence.
- If you are writing a persuasive/defensive paper, it is important to state opposing opinions and disprove them.



5. SUPPORT YOUR THESIS

- Have good research and facts.
- Make sure they're from trusted sources and that they're relevant to your thesis.
- Make sure you use clear arguments for support.



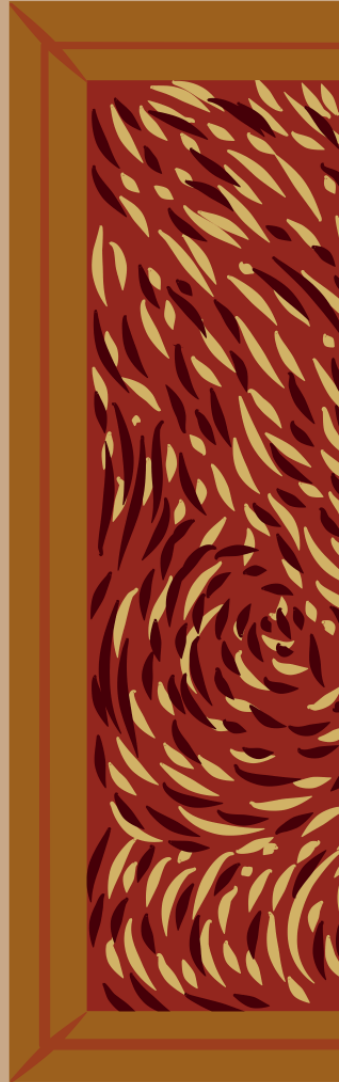
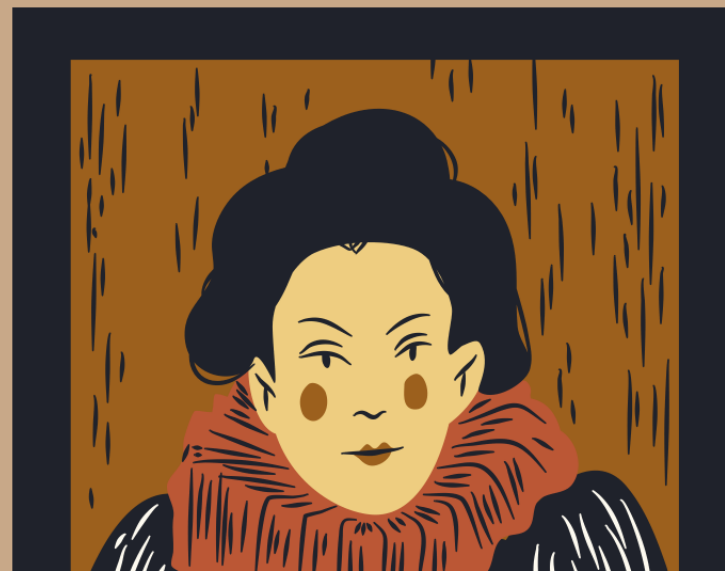
5. SUPPORT YOUR THESIS

- Have a point and stay focused.
 - Do each of your body paragraphs work towards proving your thesis?
 - The better your focus, the more effective your paper will be.



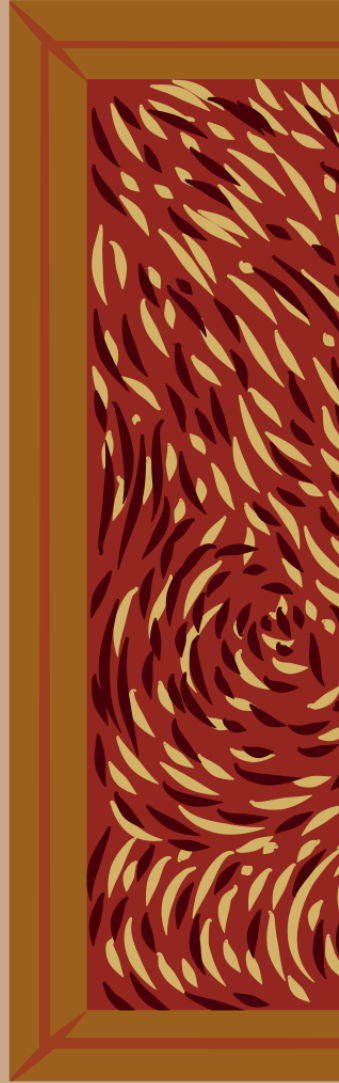
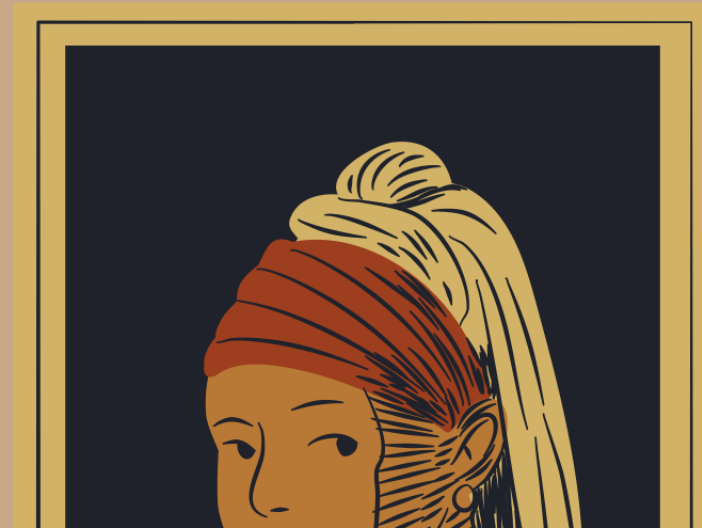
6. USE YOUR OWN WORDS

- Do yourself a favor...
---> DON'T PLAGIARIZE!!!
- Don't just copy and paste your references.
 - References serve to aid your arguments
 - They are not your argument
 - References should be used strategically



6. USE YOUR OWN WORDS

- What you should aim for is summarizing and interpreting information in YOUR OWN WORDS.
- Professors want to see you come up with your own ideas and interpretations.





7. DON'T PROCRASTINATE

- Don't put off your papers until the last minute.
 - This creates bad papers
- It might be better if you divide your work
 - Set small goals for yourself.
 - Step 1: Research
 - Step 2: Outline
 - Step 3: Write Thesis
 - Step 4: etc...

8. DON'T BE AFRAID TO USE RESOURCES AVAILABLE TO YOU

- If you're stuck, the best solution may be to talk to someone about your writing.
- Tutors and professors are here to help you and work with you.

8. DON'T BE AFRAID TO USE RESOURCES AVAILABLE TO YOU



Your Professor/ TA

Don't be afraid to go to office hours or send an email asking questions.



The Writing Center

Writing consultants are there to help you with your writing.

Your Peers

Ask the people taking the class with you for help, a different perspective can go a long way



9. PROOFREAD AND REVISE

- It's important to revise your work for spelling and grammar mistakes.
 - This is important to check if your ideas are organized
- Having someone else read your paper for you is super effective.
- Don't skip this step since typos can lower your grade.



10. THE MOST IMPORTANT THING..

You NEED to remember this!



10. THE MOST IMPORTANT THING..

**YOU
got
This**

BELIEVE IN

YOURSELF

never doubt
yourself

*You
can
do it*

*tú puedes
hacerlo*

**YOU
GOT
THIS!**


**YOU GOT
THIS!**



ANY QUESTIONS?



THANK YOU!

Follow our social media! @uwctutors



*Any Writer.
Any Writing.*

Features and Services:

Brainstorming and Prewriting Assistance
Essay Organization
Genre and Audience Analysis
Writing and Revision Strategies
Video, Website, and Multimodal Project Advice
APA, MLA, and Chicago Style Assistance
Group Work Assistance and Workspace
Classroom Workshops
Faculty Services
Assistance for First-Year Students through PhDs

Hours

Monday-Thursday

9:00 a.m. - 6:00 p.m.

Friday

9:00 a.m. - 2:00 p.m.

Sunday

12:00 p.m. - 5:00 p.m.

Online Appointments Available

UWC.UTEP.EDU